

# DSC®

Works when it **matters most.**



EUROPE, MIDDLE EAST & AFRICA EDITION  
CATALOG 2010/11

▼ [proceed to contents](#)



THE POWER OF SPEED

# ALEXOR

## The Great Protector.

The 2-Way Wireless Panel and "virtual" brain of DSC's 2-Way Wireless Security Suite, ALEXOR provides fully supervised wireless communication to DSC's 2-Way and 1-Way 433 MHz and 868 MHz wireless peripherals -- keypads, sirens, detectors and wireless keys, as well as GSM and IP communications.

### Keypads

2-Way Wireless  
Wire-Free Keypad  
**WT5500**  
(Page 1)



### Communicators

Internet and GSM/  
GRPS Dual-Path Alarm  
Communicator  
**TL265GS**  
(Page 32)



### Wireless Keys

2-Way Wireless Key  
**WT4989 / WT8989**  
(Page 18)



GSM/GPRS Wireless  
Alarm Communicator  
**GS2065**  
(Page 32)



COMING SOON!  
**INTEGRATED  
VOICE DIALER**

### Sirens

2-Way Wireless  
Indoor Siren  
**WT4901 / WT8901**  
(Page 20)



### Detectors

Wireless  
CO Detector  
**WS4913 EU / 8913 EU**  
(Page 19)



2-Way Wireless  
Outdoor Siren  
**WT4911 / WT8911**  
(Page 20)



Wireless  
Flood Detector  
**WS4985W / WS8985W**  
(Page 21)



Click on any heading  
to access content.  
Hit 'esc' to exit full screen mode.



EUROPE, MIDDLE EAST & AFRICA EDITION



## CONTENTS

### PANELS, KEYPADS & MODULES

- 1** Wireless
- 2-9** PowerSeries
- 10** Integration
- 11** Audio Verification
- 12** Fire Panels
- 13-15** MAXSYS<sup>®</sup>

### SENSORS & ACCESSORIES

- 18-21** 433 & 868 MHz Wireless
- 22-23** Addressable
- 24-25** Motion Detectors
- 26-29** LC Series
- 30** Glassbreak Detectors
- 31** Smoke Detectors

### COMMUNICATIONS

- 32-35** Transmitters
- 36-37** Sur-Gard<sup>®</sup>

### MISCELLANEOUS

- 16-17** Software Solutions
- 38** Services & Support
- 39-44** Approval Listings



## Compatibility

DSC products are designed to work with existing or future products.

## Durability

DSC products are designed to work, last and withstand extreme situations.

## Upgradeable

DSC products allow you to expand and enhance systems with no replacement necessary.

## Reliability

DSC products go beyond industry-required testing to ensure reliability and product life.

## Flexibility

DSC products allow you to build a system that works for you with over 1000 configurable items.

## Quality

DSC is committed to Six Sigma's utilization of consistent and predictable processes to improve what the customer sees and feels.



## Wireless

### ALEXOR 2-Way Wireless Panel PC9155

- 32 wireless zones, 16 wireless keys (without using a zone slot)
- Template programming
- 16 user codes, 1 master code and 1 maintenance code
- Account code error checking (patent pending)
- Alternate communications via GSM/GPRS and IP
- Onboard siren at 85dB
- 2 Input/Output terminals
- 200mA Aux Output
- 500 event buffer
- Wall and case tamper
- 24Hr Battery backup
- Powered by internal or external transformer
- Available in 433 MHz and 868 MHz

**COMING SOON!**  
**INTEGRATED VOICE DIALER**



**COMING SOON!**

- SMS Command and Control with confirmation
  - Allows for arming, disarming, bypassing, etc.
- Independent opening and closing door chime control
- Seamless quick enroll and placement testing
- Voice Dialer for ALEXOR
  - Integrated voice dialer
  - Voice dialer supports 16 languages
- Voice library of 50 words, includes 16 custom recorded words and 1 site identity
- 6 voice dial numbers for multiple path communication of events
- Programmable call directions for voice calls
- Remote access via the phone line to arm/disarm/bypass
- Ability to switch from voice dial call to remote access

Approval Listings: European CE Directives (EMC, R&TTE, LVD)

### 2-Way Wireless Wire-Free Keypad WT5500

- 2x16 full message display
- Intuitive clock programming
- Multiple door chime
- Ambient light sensor
- Display and keymat backlighting
- Outdoor temperature display
- Wall and Deskstand\* mount
- † Proximity Tag PT4 Arm/Disarm (WT5500P only)
- Installer's programming
- Multi-Language support
- 5 programmable function keys
- 3 one-touch emergency keys
- Tamper switch
- Nominal battery life - 3 years
- Compatible with ALEXOR 868 MHz
- Available in 433 MHz and 868 MHz



**COMING SOON!**

- Visual armed status during sleep mode

\*WT5500D or WT5500DMK

Approval Listings: European CE Directives (EMC, R&TTE, LVD)

### Self-Contained Wireless Alarm System PowerSeries 9045

- Smallest footprint of any self-contained wireless alarm system currently available
- Aesthetically pleasing design
- Supports 32 wireless zones and 16 wireless keys (without using a zone slot)
- Large 2 x 16 display
- Full 32-character programmable labels
- Enlarged keypad buttons
- 5 programmable function keys
- Intuitive clock programming
- Input/Output terminals can be programmed to operate as zone inputs or programmable outputs
- Individual FAP keys
- Wireless quick enroll
- Template programming
- 17 user codes
- 128 event buffer
- 1 partition
- Available in 433 MHz and 868 MHz



Approval Listings: European CE Directives (EMC, R&TTE, LVD), FCC/IC, UL/ULC

Some products are not available in all countries. Contact your local distributor for details.

## PowerSeries

### PowerSeries Control Panel PC585

- 4 on-board zones
- 32 wireless zones
- 2 PGM outputs
- Connect up to 8 supervised keypads with keypad zones
- 1 partition
- 128-event buffer
- 32 user codes

Approval Listings: European CE Directives (EMC, R&TTE, LVD), INCERT (Belgium), FCC/IC, CERT (Tunisia)



### PowerSeries Control Panel PC1616

- 6 on-board zones
- Expandable to 16 hardwired zones
- Expandable to 32 wireless zones
- 2 PGM outputs: expandable to 14 (PC5204, PC5208)
- Template programming
- Connect up to 8 supervised keypads with keypad zones
- 2 partitions
- 500-event buffer
- 48 user codes

Approval Listings: European CE Directives (EMC, R&TTE, LVD), INCERT (Belgium), NCP (Holland), NFA2P Type 2 (France), IMQ (Italy) Livello 2, SBSC (Sweden) Larmklass 2, EN50131-1/-3/-6 Grade 2, Class II Environmental, ICASA (South Africa), FCC/IC, UL/ULC, F&P Class 2 Grade 2 (Denmark), SVK Class 2 Grade 2 (Finland), FG Class 2 Grade 2 (Norway), ETA (Ethiopia)



### PowerSeries Control Panel PC1832

- 8 on-board zones
- Expandable to 32 hardwired zones
- Expandable to 32 wireless zones
- 2 PGM outputs: expandable to 14 (PC5204, PC5208)
- Template programming
- Connect up to 8 supervised keypads with keypad zones
- 4 partitions
- 500-event buffer
- 72 user codes

Approval Listings: European CE Directives (EMC, R&TTE, LVD), INCERT (Belgium), NCP (Holland), NFA2P Type 2 (France), IMQ (Italy) Livello 2, SBSC (Sweden) Larmklass 2, EN50131-1/-3/-6 Grade 2, Class II Environmental, ICASA (South Africa), FCC/IC, UL/ULC, F&P Class 2 Grade 2 (Denmark), SVK Class 2 Grade 2 (Finland), FG Class 2 Grade 2 (Norway), ETA (Ethiopia)



### PowerSeries Control Panel PC1864

- 8 on-board zones
- Expandable to 64 hardwired zones
- Expandable to 32 wireless zones
- 4 PGM outputs: expandable to 14 (PC5204, PC5208)
- Template programming
- Connect up to 8 supervised keypads with keypad zones
- 8 partitions
- 500-event buffer
- 95 user codes

Approval Listings: European CE Directives (EMC, R&TTE, LVD), INCERT (Belgium), NCP (Holland), NFA2P Type 2 (France), IMQ (Italy) Livello 2, SBSC (Sweden) Larmklass 2, EN50131-1/-3/-6 Grade 2, Class II Environmental, ICASA (South Africa), FCC/IC, UL/ULC, F&P Class 2 Grade 2 (Denmark), SVK Class 2 Grade 2 (Finland), FG Class 2 Grade 2 (Norway), ETA (Ethiopia)



**NOW AVAILABLE!**

**TL260GS (Internet and GSM/GPRS) Alarm Communicator and GS2060 (GSM/GPRS) Alarm Communicator.**

Both Integrated Communicators offer options for uploading/downloading over the Internet/GSM network and are compatible with PC1616/PC1832/PC1864 PowerSeries control panels. (See page 33 for product details)

Some products are not available in all countries. Contact your local distributor for details.

# PowerSeries Control Panel Overview

## Feature Comparison Chart

Features	PC585	PC1616	PC1832	PC1864
Number Of On-board Zones	4	6	8	8
Total Zones Supported	32	32	32	64
Keypad Zone Expansion	Yes	Yes	Yes	Yes
Hardwired Zone Expansion	No	Yes	Yes	Yes
Hardwired Zones	-	16 (1 x PC5108)	32 (3 x PC5108)	64 (7 x PC5108)
Wireless Zone Expansion	Yes	Yes	Yes	Yes (32 Wireless)
Addressable Zone Expansion	No	Yes	Yes	Yes (32 Addressable)
Number of Keypads	8	8	8	8
Number of Wireless Receivers	4	4	4	4
On-Board PGM Outputs	PGM 1 = 50 mA PGM 2 = 50mA	PGM 1 = 50 mA PGM 2 = 300mA	PGM 1 = 50 mA PGM 2 = 300mA	PGM 1, 3, 4 = 50 mA PGM 2 = 300mA
Number of Main Panel Low-Current PGM Outputs	2	1	1	3
Number of Main Panel High-Current PGM Outputs	-	1	1	1
PGM Expansion	-	8 x 50 mA (PC5208) 4 x 500 mA (PC5204)	8 x 50 mA (PC5208) 4 x 500 mA (PC5204)	8 x 50 mA (PC5208) 4 x 500 mA (PC5204)
Number of Additional Low-Current PGM Outputs	-	8	8	8
Number of Additional High-Current PGM Outputs	-	4	4	4
Number of Access Codes	32+ Master Code	47+ Master Code	71+ Master Code	94+ Master Code
Number of Partitions	1	2	4	8
Panel Event Buffer	128	500	500	500
Phone Line Supervision	Yes	Yes	Yes	Yes
Siren Supervision	Yes	Yes	Yes	Yes
Bell Output	12 V / 700 mA (cont)	12 V / 700 mA (cont)	12 V / 700 mA (cont)	12 V / 700 mA (cont)
SIA CP-01 Compliant	No	Yes	Yes	Yes
Event-Initiated Personal Paging	Yes	Yes	Yes	Yes
Upload/Download Support	Yes	Yes	Yes	Yes
Direct-Connect (PC Link) Downloading Support	Yes	Yes	Yes	Yes
DLS2002SA End-User Downloading Support	-	Yes	Yes	Yes
Internet Alarm Communications	No	Yes	Yes	Yes
Audio Alarm Verification	No	Yes	Yes	Yes
GSM Alarm Communications	Yes	Yes	Yes	Yes
Battery Required	4 Ah / 7 Ah / 14 Ahr	4 Ah / 7 Ah / 14 Ahr	4 Ah / 7 Ah / 14 Ahr	4 Ah / 7 Ah / 14 Ahr

Some products are not available in all countries. Contact your local distributor for details.

## PowerSeries Control Panel Overview

### PowerSeries Module Version Compatibility Chart

Modules	PC585	PC1616	PC1832	PC1864
PC5100 Addressable Zone Expander	-	All	All	All
PC5108 8-Hardwire Zone Expander	-	All	All	All
RF5108-433 Wireless Receiver	All	All	All	All
RF5132-433 Wireless Receiver	All	All	All	All
PC5200/PC5204 Power Supply Modules	-	All	All	All
PC5208 Programmable Output Module	-	All	All	All
PC5320 Multiple Wireless Receiver Module	All	All	All	All
PC5400 Printer Interface Module	-	All	All	All
PC5601 Status Module	All	All	All	All
Escort 5580TC Telephone Interface & Automation Control Module	-	All	All	All
PK5590CL PowerSeries Touchscreen Interface Module	All	All	All	All
PK5500/RFK5500 64-Zone LCD Full-Message Keypad	All	All	All	All
PK5501/RFK5501 64-Zone LCD Picture ICON Keypad	All	All	All	All
PK5516/RFK5516 16-Zone LED Keypad	All	All	All	All
PK5508/RFK5508 8-Zone LED Keypad	All	All	All	All
LED5511Z 8-Zone LED Keypad	All	All	All	All
LCD5511 64-Zone ICON LCD Keypad	All	All	All	All
PC1555RKZ 8-Zone LED Keypad	All	All	All	All
T-Link TL150 Residential IP Alarm Communicator	All	All	All	All
T-Link TL250 Internet Alarm Communicator	-	All	All	All
T-Link TL300 Universal IP Alarm Communicator	All	All	All	All
GS3055-IGW GSM/GPRS Universal Wireless Alarm Communicator	All	All	All	All
GS2060 GSM/GPRS Wireless Alarm Communicator	-	All	All	All
TL260GS Internet and GMS/GPRS Dual-path Alarm Communicator	-	All	All	All
IT-100/IT-120 Integration Modules	All	All	All	All
PC5950 Audio Verification Module	All	All	All	All
PC5961 Stand Alone Audio Station	All	All	All	All
PC5962 Contoured Audio Station	All	All	All	All
PC5964 Large Speaker Station	All	All	All	All

Some products are not available in all countries. Contact your local distributor for details.



## PowerSeries 64-Zone LCD Full-Message Keypad PK5500 RFK5500 with built-in wireless receiver

- 8 language support
- Global partition status
- Full 32-character programmable labels
- Modern, slim-line landscape keypad
- Enlarged keypad buttons
- 5 programmable function keys
- Intuitive clock programming\*
- Input/Output terminal can be programmed to operate as a zone input, programmable output or as a low temperature sensor
- 3 one-touch emergency keys
- Multiple door chime per zone
- Adjustable backlight and keypad buzzer
- Wire channel
- Dual wall-mount and front cover tamper
- Easy-to-install mounting hinge
- Surface or single-gang box mount
- New AC status ICON
- RFK5500-433 and NEW RFK5500-868 include all of the same features and supports 32 wireless zones and 16 wireless keys



Approval Listings: European CE Directives (EMC), INCERT (Belgium), NCP (Holland), NFA2P Type 2 (France), IMQ (Italy) Livello 2, SBSC (Sweden) Larmklass 2, EN50131-1 Grade 2\*\*, Class II Environmental, FCC/IC, UL/ULC, F&P Grade 2 (Denmark), SVK Grade 2 (Finland), FG Grade 2 (Norway)

\* Feature only available with new PowerSeries control panels (PC1616, PC1832 and PC1864)

\*\* Available on PK and RFK-868 version keypads

## PowerSeries 64-Zone LCD Picture Icon Keypad PK5501 RFK5501 with built-in wireless receiver

- Modern, slim-line landscape keypad
- Enlarged keypad buttons
- 5 programmable function keys
- Input/Output terminal can be programmed to operate as a zone input, programmable output or as a low temperature sensor
- 3 one-touch emergency keys
- Multiple door chime per zone
- Adjustable backlight and keypad buzzer
- Wire channel
- Dual wall-mount and front cover tamper
- Easy-to-install mounting hinge
- Surface or single-gang box mount
- New AC status ICON
- RFK5501-433 and NEW RFK5501-868 include all of the same features and supports 32 wireless zones and 16 wireless keys



Approval Listings: European CE Directives (EMC), INCERT (Belgium), IMQ (Italy) Livello 2, SBSC (Sweden) Larmklass 2, EN50131-1 Grade 2\*\*, Class II Environmental, FCC/IC, UL/ULC, F&P Grade 2 (Denmark), SVK Grade 2 (Finland), FG Grade 2 (Norway), NCP (Holland)

\*\* Available on PK and RFK-868 version keypads

## PowerSeries 16-Zone LED Keypad PK5516 RFK5516 with built-in wireless receiver

- Modern, slim-line landscape keypad
- Enlarged keypad buttons
- 5 programmable function keys
- Input/Output terminal can be programmed to operate as a zone input, programmable output or as a low temperature sensor
- Individual FAP keys
- Multiple door chime per zone
- Adjustable backlight and keypad buzzer
- Wire channel
- Dual wall-mount and front cover tamper
- Easy-to-install mounting hinge
- Surface or single-gang box mount
- New AC status ICON
- RFK5516 includes all of the same features and supports 32 wireless zones and 16 wireless keys



Approval Listings: European CE Directives (EMC), INCERT (Belgium), IMQ (Italy) Livello 2, SBSC (Sweden) Larmklass 2, EN50131-1 Grade 2\*\*, Class II Environmental, FCC/IC, UL/ULC, F&P Grade 2 (Denmark), SVK Grade 2 (Finland), FG Grade 2 (Norway), NCP (Holland)

\*\* Available on PK version keypads

Some products are not available in all countries. Contact your local distributor for details.

## PowerSeries 8-Zone LED Keypad PK5508 RFK5508 with built-in wireless receiver

- Modern, slim-line landscape keypad
- Enlarged keypad buttons
- 5 programmable function keys
- Input/Output terminal can be programmed to operate as a zone input, programmable output or as a low temperature sensor
- 3 one-touch emergency keys
- Multiple door chime per zone
- Adjustable backlight and keypad buzzer
- Wire channel
- Dual wall-mount and front cover tamper
- Easy-to-install mounting hinge
- Surface or single-gang box mount
- New AC status ICON
- RFK5508 includes all of the same features and supports 32 wireless zones and 16 wireless keys



Approval Listings: European CE Directives (EMC), INCERT (Belgium), IMQ (Italy) Livello 2, SBSC (Sweden) Larmklass 2, EN50131-1 Grade 2\*\*, Class II Environmental, FCC/IC, UL/ULC, F&P Grade 2 (Denmark), SVK Grade 2 (Finland), FG Grade 2 (Norway), NCP (Holland)

\*\* Available on PK version keypads

## PowerSeries 8-Zone LED Keypad LED5511Z

- Modern, slim-line portrait keypad
- Large, backlit buttons on keypad for trouble-free viewing and activation
- 4 programmable function keys
- Dual FAP keys
- Dual tamper support
- Zone input
- Surface or single-gang box mount
- Wire channel

Approval Listings: European CE Directives (EMC), FCC/IC, UL/ULC



## PowerSeries 64-Zone Icon LCD Keypad LCD5511

- Modern, slim-line portrait keypad
- Large, backlit buttons on keypad for trouble-free viewing and activation
- Intuitive symbols and backlit display
- Input/Output terminal can be programmed to operate as a zone input, programmable output or as a low temperature sensor
- 4 programmable function keys
- 8 partition support
- Dual FAP keys
- Wire channel
- New AC status ICON

Approval Listings: European CE Directives (EMC), FCC/IC, UL/ULC



## PowerSeries 8-Zone LED Keypad PC1555RKZ

- LED status lights for zones and status functions
- Zone input

Approval Listings: European CE Directives (EMC), FCC/IC, UL/ULC, CERT (Tunisia)



Some products are not available in all countries. Contact your local distributor for details.

# PowerSeries

## Keypad Overview

### PowerSeries Keypad Features

General Features	PK5500*	PK5501*	PK5516*	PK5508*
Display Type	LCD/ALPHA	LCD/FIXED	LED	LED
Zone Support	64	64	16	8
Partition Support	8	8	8	8
Number of Function Keys	5	5	5	5
Dedicated Function Keys	Yes	Yes	Yes	Yes
Dedicated FAP Keys	Yes	Yes	Yes	Yes
Dual FAP Keys	No	No	No	No
Key Size	Large	Large	Large	Large
AC Status LED	Yes	Yes	Yes	Yes
Integrated Low Temperature Sensor	Yes	Yes	Yes	Yes
Zone Input	Yes	Yes	Yes	Yes
PGM Output	Yes	Yes	Yes	Yes
DEOL Zone Supervision	Yes	Yes	Yes	Yes
Intuitive Clock Programming	Yes	No	No	No
Backlighting Adjustment Control	Yes	Yes	Yes	Yes
Buzzer Adjustment Control	Yes	Yes	Yes	Yes
Multiple Chime Per Zone	Yes	Yes	Yes	Yes
<b>Hardware</b>				
Bezel Color	White	White	White	White
Soft/Hard Lens	Hard	Hard	Hard	Hard
Profile	Landscape	Landscape	Landscape	Landscape
* Integrated RF Receiver Models	RFK5500	RFK5501	RFK5516	RFK5508
Buzzer/Backlighting Adjustment Retained After Power Loss	Yes	Yes	Yes	Yes
"Hands Free" Installation Hinge	Yes	Yes	Yes	Yes
Wire Channel	Yes	Yes	Yes	Yes
Single-Gang Box Mount	Yes	Yes	Yes	Yes
Double-Gang Box Mount	Yes	Yes	Yes	Yes
Case Tamper (Dual Tamper Support)	Yes	Yes	Yes	Yes

\* RFK versions of these keypads are available with a built-in wireless receiver and support 32 wireless zones and 16 wireless keys

Some products are not available in all countries. Contact your local distributor for details.

# PowerSeries Keypad Overview

## PowerSeries Keypad Features Continued

General Features	PK5590CL	LCD5511	LED5511Z
Display Type	Touchscreen	LCD/FIXED	LED
Zone Support	64	64	8
Partition Support	1	8	2
Number of Function Keys	N/A	4	4
Dedicated Function Keys	N/A	No	No
Dedicated FAP Keys	Yes	No	No
Dual FAP Keys	No	Yes	Yes
Key Size	Small	X-Large	X-Large
AC Status LED	No	No	No
Integrated Low Temperature Sensor	No	Yes	No
Zone Input	No	Yes	Yes
PGM Output	No	Yes	No
DEOL Zone Supervision	No	No	No
Intuitive Clock Programming	Yes	No	No
Backlighting Adjustment Control	Yes	No	No
Buzzer Adjustment Control	No	Yes	Yes
Multiple Chime Per Zone	No	Yes	No
<b>Hardware</b>			
Bezel Color	White	White	White
Soft/Hard Lens	Hard	Soft	Soft
Profile	Landscape	Portrait	Portrait
* Integrated RF Receiver Models	N/A	N/A	N/A
Buzzer/Backlighting Adjustment Retained After Power Loss	Yes	No	No
"Hands Free" Installation Hinge	N/A	No	No
Wire Channel	No	Yes	Yes
Single-Gang Box Mount	No	Yes	Yes
Double-Gang Box Mount	No	No	No
Case Tamper (Dual Tamper Support)	No	Yes	Yes

Some products are not available in all countries. Contact your local distributor for details.

## PowerSeries Addressable Zone Expander PC5100

- Connect up to 32 addressable detectors (AML)
- Detectors can be home-run, t-tapped or daisy chained
- Easy detector enroll process
- Compatible with PC1616, PC1832 and PC1864 control panels

Approval Listings: European CE Directives (EMC), FCC/IC, UL/ULC



## PowerSeries 8-Hardwire Zone Expander PC5108

- Adds 8 hardwire zones
- AUX power, 125 mA (PTC protected)
- Compatible with PC1616, PC1832 and PC1864 control panels

Approval Listings: European CE Directives (EMC), INCERT (Belgium), NCP (Holland), NFA2P Type 2 (France), IMQ (Italy) Livello 2, SBSC (Sweden) Larmklass 2, EN50131-1 Grade 2, Class II Environmental, FCC/IC, UL/ULC, CERT (Tunisia)

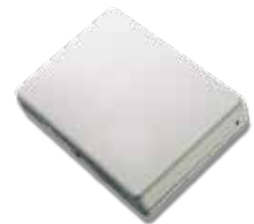


## PowerSeries Wireless Receivers RF5132-433 & RF5132-868

- Supports 32 wireless zones, 16 wireless keys
- All wireless detectors are fully supervised for communication integrity
- RF5132-433 is compatible with all PowerSeries control panels
- Available in both 433 MHz and 868 MHz

RF5132-433: Approval Listings: European CE Directives (EMC, R&TTE, LVD), INCERT (Belgium), NCP (Holland), IMQ (Italy) Livello 2, Class II Environmental, ICASA (South Africa), FCC/IC, UL/ULC

RF5132-868: Approval Listings: European CE Directives (EMC, R&TTE, LVD), ICASA (South Africa)



## PowerSeries Power Supply Modules PC5200 & PC5204

- Provides up to 1 Amp @ 12 VDC
- Fully supervised for AC failure, low battery and AUX failure
- PC5204 adds 4 programmable high current voltage outputs: rated at 1 Amp @ 12 VDC, output #1 can be used as a supervised bell output
- Connect one PC5204 and up to four PC5200 supervised modules on a system
- Compatible with PC1616, PC1832 and PC1864 control panels

PC5200: Approval Listings: European CE Directives (EMC), FCC/IC, UL/ULC

PC5204: Approval Listings: European CE Directives (EMC), INCERT (Belgium), NCP (Holland), NFA2P Type 2 (France), IMQ (Italy) Livello 2, SBSC (Sweden) Larmklass 2, EN50131-1 Grade 2, Class II Environmental, FCC/IC, UL/ULC



## PowerSeries Programmable Output Module PC5208

- Provides 8 low current (50 mA) PGM voltage outputs
- Compatible with PC1616, PC1832 and PC1864 control panels

Approval Listings: European CE Directives (EMC), INCERT (Belgium), NCP (Holland), IMQ (Italy) Livello 2, SBSC (Sweden) Larmklass 2, EN50131-1 Grade 2, Class II Environmental, FCC/IC, UL/ULC



Some products are not available in all countries. Contact your local distributor for details.

## Integration

### PowerSeries Multiple Wireless Receiver Module PC5320

- Can be used to connect up to 4 wireless receivers for increased coverage
- Multi-frequency support for combination of 900/433 MHz receivers
- Compatible with all PowerSeries control panels

Approval Listings: European CE Directives (EMC), INCERT (Belgium), NCP (Holland), FCC/IC, UL/ULC



### PowerSeries Printer Interface Module PC5400

- Can be used to support a serial printer
- Compatible with PC1616, PC1832 and PC1864 control panels

Approval Listings: European CE Directives (EMC), INCERT (Belgium), NCP (Holland), FCC/IC, UL/ULC



### PowerSeries Telephone Interface & Automation Control Module ESCORT 5580TC

- Turns any touchtone phone into a talking keypad
- Programmable labels: 6 words per label, 240+ word library
- Built-in X-10 interface: supports up to 32 X-10 devices, 16 schedules, 8 modes
- Compatible with PC1616, PC1832 and PC1864 control panels

Approval Listings: European CE Directives (EMC, R&TTE, LVD), INCERT (Belgium), NCP (Holland), NFA2P Type 2 (France), FCC/IC, UL/ULC



### PowerSeries Status Module PC5601

- Tri-color LED provides security system status at a glance
- Standard single-gang footprint
- Sleek plastic enclosure complements home décor
- Color-coded wiring harness included
- Only supports partition 1
- KEYBUS-compatible with all PowerSeries control panels

Approval Listings: Not CE Listed



### PowerSeries Integration Module IT-100

- Compatible with all PowerSeries control panels
- Bi-directional RS-232 interface
- Real-time zone status
- Fully programmable
- 4-wire hook-up to KEYBUS
- Virtual keypad mode
- Supported by many integration drivers

Approval Listings: European CE Directives (EMC), FCC/IC



Some products are not available in all countries. Contact your local distributor for details.

## Audio Verification

### Universal 2-Way VOX Audio Verification Module PC5950

- Supports both 2-way audio VOX and push-to-talk verification
- Supports 4 microphones and 4 speakers
- Silent/Listen-in functionality on hold-up alarms (activates only when an alarm occurs)
- User call-in feature
- KEYBUS direct connect allows all programming to be performed at the system keypad or remotely using DLS2002 software
- KEYBUS compatible with all PowerSeries control panels
- Universal installation compatibility with any control panel using either PGM and/or Bell dry contact outputs



Approval Listings: European CE Directives (EMC, R&TTE, LVD), FCC/IC

### Stand-Alone Audio Station PC5961

- Equipped with speaker/microphone
- New modern look
- Specifically designed for 2-way voice verification
- 4-wire connection to module
- Surface or single-gang box mount
- Compatible with PC5950 and PC5900 modules

Approval Listings: European CE Directives (EMC), FCC/IC



### Contoured Audio Station PC5962

- Equipped with speaker/microphone
- Fits seamlessly to side of PK/RFK series of keypads
- New modern look
- Specifically designed for 2-way voice verification
- 4-wire connection to module
- Compatible with PC5950 and PC5900 modules

Approval Listings: European CE Directives (EMC), FCC/IC



### Large Speaker Station PC5964

- Equipped with speaker/microphone
- New modern look
- Specifically designed for 2-way voice verification
- Bell follower functionality (replaces internal sounder on premises. PC5950 only)
- 4-wire connection to module
- Surface or single-gang box mount
- Compatible with PC5950 and PC5900 modules

Approval Listings: European CE Directives (EMC), FCC/IC



Some products are not available in all countries. Contact your local distributor for details.

## Fire Panels

### Conventional Fire Panel CFD4800

- Available in 2, 4 and 8 zone non-expandable fire panels
- 8 to 24 zone expandable fire panel
- Up to 21 devices per zone
- Gas detector compatible (4 -20mA gas detectors)
- Extinguishing module

Approval Listings: European CE Directives (EMC, CPD)

Model	Description
CFD4802	2 zone fire control panel
CFD4804	4 zone fire control panel
CFD4808	8 zone fire control panel
CFD4824	8 expandable to 24 zone fire control panel
CFD4001	Repeater panel for CFD series
J400-LCD	Display module
PCJ400BRIDGE	Serial interface module
CFD4808EXT	Extinguisher module with microprocessor control
J400EXP8	8 zone expander module for CFD4824 panels



### Addressable Fire Panels AFD2000

- One and two loop control panels and remote repeater display module
- Each loop supports 250 FireClass Digital Loop addressable detectors
- Devices can be mixed and matched in any combination
- Network up to 8 FireClass control panels via the onboard RS485 bus
- FIRECLASS500 Console Software

Approval Listings: European CE Directives (EMC, CPD)

Model	Description
AFD2010	One Loop Addressable Fire Panel
AFD2020	Two Loop Addressable Fire Panel
AFD2001	Repeater Display Module



Some products are not available in all countries. Contact your local distributor for details.



## MAXSYS

### MAXSYS Control Panel PC4020

- 16 on-board zones
- Expandable up to 128 zones using hardwire, wireless modules and addressable zones
- Supports up to 16 hardwired keypads
- Expandable to 64 zones
- 8 partitions
- 1,500 user codes (4 or 6 digit)
- 3,000-event buffer
- 9 account and 3 phone numbers
- Built-in telephone line and siren supervision
- Auto SIA and Contact ID formats
- Supports GSM and T-Link™ alarm communicators
- Full upload/download support with DLS download software

Approval Listings: European CE Directives (EMC, R&TTE, LVD), INCERT (Belgium), FCC/IC, UL/ULC, SBSC (Sweden), ETA (Ethiopia)



### MAXSYS Programmable-Message LCD Keypad LCD4501

- Connect up to 16 keypads
- Large, backlit, 2-line, 32-character display
- Plain-language display of zone status, system status, trouble conditions, event buffer, system instructions, date and time
- Ready, Armed and Trouble LEDs
- 5 programmable function keys
- 4 keypad-activated alarms: Panic, Auxiliary, Fire and Duress
- Backlight boost

Approval Listings: European CE Directives (EMC), INCERT (Belgium), FCC/IC, UL/ULC



### MAXSYS 8/16 Hardwire Zone Expanders PC4108A & PC4116

- PC4108A adds 8 hardwire zones
- PC4116 adds 16 hardwire zones
- AUX power rated at 250 mA (PTC protected)

PC4108A: Approval Listings: European CE Directives (EMC), INCERT (Belgium), FCC/IC, UL/ULC

PC4116: Approval Listings: FCC/IC, UL/ULC, Not CE Listed



Some products are not available in all countries. Contact your local distributor for details.

## MAXSYS Power Supply/Relay Output/Combus Repeater Module PC4204/PC4204CX

- Connect up to 16 modules
- Fully supervised for AC failure, low battery and AUX failure
- 4 programmable form 'C' relays

Approval Listings: European CE Directives (EMC), INCERT (Belgium), FCC/IC, UL/ULC



## MAXSYS 16 Low Current Output Module PC4216

- Provides 16 programmable outputs: rated at 50 mA @ 12 VDC
- Connect up to 9 PC4216 modules per system

Approval Listings: European CE Directives (EMC), FCC/IC, UL/ULC



## MAXSYS Data Interface Module PC4401

- Connect up to 4 modules
- Capable of performing as either a bi-directional RS-232 interface, PC-Link isolator, printer module
- Real-time zone status
- Fully programmable
- 4-wire hook-up to COMBUS

Approval Listings: European CE Directives (EMC), FCC/IC, UL/ULC



Some products are not available in all countries. Contact your local distributor for details.

## MAXSYS Telephone Interface and Automation Control Module ESCORT4580

- Turns any touchtone phone into a talking keypad
- Programmable labels: 6 words per label, 240+ word library
- Built-in X-10 interface: supports up to 32 X-10 devices, 16 schedules, 8 modes
- Available in English, Spanish and French

Approval Listings: European CE Directives (EMC, R&TTE, LVD), FCC/IC, UL/ULC



## MAXSYS 32/64 Point Graphic Annunciators PC4632 & PC4664

- Egg-crate backplate for flexible LED locations
- Pre-printed point display transparency
- Clear transparencies (2) for custom graphics

PC4632: Approval Listings: Not CE Listed, FCC/IC, UL

PC4664: Approval Listings: European CE Directives (EMC), FCC/IC



## MAXSYS 2-Reader Access Control Module PC4820

- Connect up to 16 modules
- Multiple reader technologies
- 2 supervised lock outputs: 250 mA per output
- 64 user access levels
- 99 date schedules
- 2 access door support per module for up to total of 32 on system
- 4 holiday groups
- Arm/Disarm partitions via access control
- PC4053 beige cabinet included

Approval Listings: European CE Directives (EMC), FCC/IC, UL/ULC



Some products are not available in all countries. Contact your local distributor for details.



## DLS2002 Downloading Software

DLS2002 downloading software by DSC® is much more than just a software package for remotely programming control panels. It's also a great diagnostic tool, and includes features such as auto-detect panel type and version, upgrade wizard, and error checking. DLS2002 will help streamline installations, reduce programming time and decrease service calls. It gives you the ability to make changes to a system remotely in minutes, without having to visit the site. DLS2002 supports all current product software versions and will take your installation and service capabilities to the next level.

### DLS2002SA SYSTEM ADMINISTRATOR SOFTWARE

The DLS2002SA System Administrator software is a perfect solution for large or multi-location business applications using the PC1864 or MAXSYS control panel. The software is simple to use and gives users the ability to view and change codes, access cards and schedules, as well as view system status, arm/disarm partitions, and view, sort and print the event buffer. The software can be found in the Products area of the DSC website under the password-protected software section.

#### Features:

- Intuitive user interface
- Automatic panel and module version detection
- Automatic panel version correction
- Automatic module version correction
- Upgrade wizard
- Error checking
- Batch programming
- System installation graphic
- Supports v4.2 and previous panels

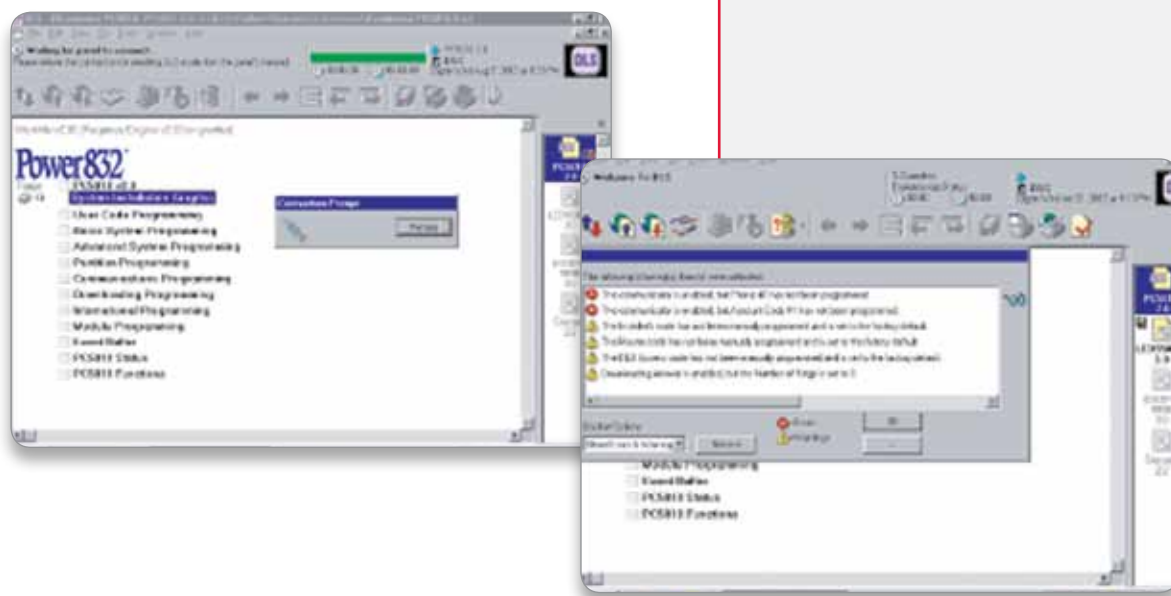
#### Available accessories:

##### PCLINK-SCW

- Direct-connect cable with serial DB-9 connector

##### MD-12

- Serial modem for remote panel communications



Some products are not available in all countries. Contact your local distributor for details.



## 433 & 868 MHz Wireless

### 2-Way Wireless Key WT4989/WT8989

- Backlit ICON display
- Built-in buzzer for audible feedback
- Key tactile feedback
- 4 one touch function keys, programmable for up to 6 functions
- Status button indication
- Wireless key keylock
- Active alarm indication
- Water resistant
- Multi-function clip
- Nominal Battery life - 3 years
- Compatible with ALEXOR 433 MHz and 868 MHz

433 Approval Listings: European CE Directives (EMC, R&TTE, LVD), ICASA (South Africa), UL/ULC, FCC/IC, CERT (Tunisia)

868 Approval Listings: European CE Directives (EMC, R&TTE, LVD)



### 1-Button Personal Panic WS4938W/WS8938W

- Activation via 1 large, easy-to-use button
- Full 2-second delay on panic button
- Integrated LED to indicate signal transmission
- Neck strap and multifunction belt clip included
- Reliable 433 MHz and 868 MHz technology
- Water resistant
- Long-life lithium batteries included
- Supervised

433 Approval Listings: European CE Directives (EMC, R&TTE, LVD), FCC/IC, UL/ULC, ICASA (South Africa)

868 Approval Listings: European CE Directives (EMC, R&TC LVD), ICASA (South Africa)



### 2-Button Personal Panic WS4938-2W

- Activation via 2 large, easy-to-use buttons
- Full 2-second delay on panic button
- Integrated LED to indicate signal transmission
- Neck strap and multifunction belt clip included
- Reliable 433 MHz technology
- Water resistant
- Long-life lithium batteries included
- Supervised

Approval Listings: European CE Directives (EMC, R&TTE, LVD)



### 4-Button Wireless Key WS4939EU/WS8939W

- Durable, scratch-resistant buttons
- 4 programmable function keys
- Long-life lithium batteries included
- Full 3-second delay on panic alarm to reduce false alarms
- Multifunction belt clip included
- Reliable 433 MHz and 868 MHz technology
- Optional generic rubber insert included
- Water resistant

433 Approval Listings: European CE Directives (EMC, R&TTE, LVD), INCERT (Belgium), NCP (Holland), IMQ (Italy) Livello 1, SBSC (Sweden) Larmklass R, EN50131-3, EN50131-6, Grade 2, Class II Environment, CERT (Tunisia), ICASA (South Africa), FCC/IC, UL/ULC, F&P (Denmark)

868 Approval Listings: European CE Directives (EMC, R&TTE, LVD), SBSC (Sweden) Larmklass R, F&P (Denmark), FG Grade 2 (Norway), ICASA (South Africa)



Some products are not available in all countries. Contact your local distributor for details.

## Wireless Door/Window Contact WS4945W / WS8945W

- Built-in reed switch
- Normally closed external contact input
- 1 lithium battery included
- Reliable 433 MHz and 868MHz technology
- Available in brown housing
- Case and wall tamper

433 Approval Listings: European CE Directives (EMC, R&TTE, LVD), INCERT (Belgium), NCP (Holland), IMQ (Italy) Livello 1, SBSC (Sweden) Larmklass R, EN50131-2-6, EN50131-6, Grade 2, Class II Environment, ICASA (South Africa), FCC/IC, UL/ULC, F&P (Denmark), CERT (Tunisia)

868 Approval Listings: European CE Directives (EMC, R&TTE, LVD), SBSC (Sweden) Larmklass R, F&P (Denmark), FG Grade 2 (Norway), ICASA (South Africa)



## Vanishing Contact WS4975W

- Built-in reed switch
- Wafer-thin profile
- Long-life lithium battery included
- 5/8" (16 mm) magnet gap
- Reliable 433 MHz and 868 MHz technology
- Includes double-sided tape

Approval Listings: European CE Directives (EMC, R&TTE, LVD)



## Wireless Passive Infrared Detector WS4904W / WS4904PW / WS8904W / WS8904PW

- WS4904W replaces the WLS904L-433W
- WS4904PW replaces the WLS904PL-433W
- Based on the Bravo® 3D hardwire motion detector
- High-traffic shutdown
- WS4904PW/WS8904PW features pet immunity up to 27 kg (60 lbs)
- 1 lithium battery included
- Reliable 433MHz and 868 MHz technology

433 Approval Listings: European CE Directives (EMC, R&TTE, LVD), INCERT (Belgium), NCP (Holland), IMQ (Italy) Livello 1, SBSC (Sweden) Larmklass R, EN50131-2-2, EN50131-6, Grade 2, Class II Environment, ICASA (South Africa), FCC/IC, UL/ULC, F&P (Denmark), CERT (Tunisia)

868 Approval Listings: European CE Directives (EMC, R&TTE, LVD), SBSC (Sweden) Larmklass R, F&P (Denmark), FG Grade 2 (Norway), ICASA (South Africa)



## Wireless CO Detector WS4913 EU / WS8913 EU

Colorless, tasteless, odorless but deadly, carbon monoxide (CO) is impossible to detect without a warning device. The WS4913 Wireless Carbon Monoxide Detector from DSC is the perfect complement to DSC's full security line-up. The WS4913 provides front-line protection against the silent threat of carbon monoxide poisoning.

- Slim-line design
- Built-in 85dB alarm at 10 ft (3 m)
- Malfunction supervision
- Low sensitivity supervision
- Electrochemical sensing technology
- Transmits RF status, low battery and tamper condition
- Hush feature
- Wall tamper
- Low battery supervision
- Onboard LEDs indicate:
  - \* Red – Alarm
  - \* Yellow – Trouble
  - \* Green – Power
  - \* Amber – Warm up
- 3-5 year battery life
- End-of-Life (EOL) indicator (5 year)
- Compatible with ALEXOR
- Reliable 433MHz and 868 MHz technology

Approval Listings: EN in progress, FCC/IC, UL/ULC



Some products are not available in all countries. Contact your local distributor for details.

## Wireless Photoelectric Smoke Detector WS4916 EU/WS8916W

- Automatic drift compensation
- Built-in, dual-sensor heat detector with fixed heat and rate of rise (non UL listed)
- Built-in 85 dB horn
- Local test button
- Low profile design
- High/Low sensitivity reporting
- Low battery indication
- Easy-maintenance removable smoke chamber
- Non-contact sensitivity reading with handheld test meter (FSD-100)
- Long-life lithium batteries included
- EN /UL/ULC listed for residential applications
- Reliable 433 MHz and 868 MHz technology

433 Approval Listings: European CE Directives (EMC, R&TTE, LVD, CPD), ICASA (South Africa), ANPI (Belgium), CERT (Tunisia), FCC/IC, UL/ULC

868 Approval Listings: European CE Directives (EMC, R&TTE, LVD, CPD), ICASA (South Africa), ANPI (Belgium)



## 2-Way Wireless Indoor Siren WT4901 /WT8901

- Siren Output – 85dB
- Siren sounds for alarms, door chimes, entry/exit delay and troubles
- Onboard test button
- Front and back tamper detection
- Transmits RF status, low battery and tamper condition
- Front and back tamper detection
- Nominal battery life - 2 years
- Compatible with ALEXOR 433 MHz and 868 MHz

Approval Listings: European CE Directives (EMC, R&TTE, LVD), FCC/IC, UL/ULC, CERT (Tunisia)



## 2-Way Wireless Outdoor Siren WT4911 /WT8911

- Siren Output – 85dB
- Siren sounds for alarms and squawks
- Strobe light functionality for visual indication
- Provides temperature to WT5500
- Wire-free keypad
- Transmits RF status, low battery and tamper condition
- Large print area for company logo
- Front and back tamper detection
- IP34 rating
- Nominal battery life - 3 years
- Strobe available in blue, red or amber
- Compatible with ALEXOR 433 MHz and 868 MHz technology

Approval Listings: European CE Directives (EMC, R&TTE, LVD), FCC/IC, UL/ULC, CERT (Tunisia)



Some products are not available in all countries. Contact your local distributor for details.



## Wireless Flood Detector WS4985W/WS8985W

The wireless flood detector is based on the WS4945 wireless door/window contact that is connected to a water probe through a 6 foot-wire. The product is enrolled as a flood zone detector with the following DSC® control panels: ALEXOR, PowerSeries 9045, PC1616, PC1832, PC1864, PC4020, and is fully supervised.

- Built-in reed switch
- Normally closed external contact input
- 1 lithium battery included
- Case and wall tamper
- End-of-line resistor
- 4 year battery life
- Compatible with ALEXOR

Approval Listings: FCC/IC, European CE Directives (EMC, R&TTE, LVD)



## Wireless Glassbreak Detector WLS912L-433W

- Based on the Acuity® glassbreak detector
- Tamper-activated test mode: should be tested using the AFT-100 glassbreak simulator
- 2 lithium batteries included

Approval Listings: European CE Directives (EMC, R&TTE, LVD), FCC/IC, UL/ULC, INCERT (Belgium), NCP (Holland), Class II Environment, ICASA (South Africa)



## Wireless Device Programmer WP-433

- Simplifies enrolling and programming of wireless devices
- Supports all DSC® door/window contacts, PIRs, glassbreak detectors and wireless keys



## Tri-Zone Wireless Door/Window Contact WS8965W

- 3 zones in 1 (each zone has an individual serial number)
- 1 reed/magnet combination zone
- Tilt switch mode for overhead doors
- 2 normally closed external contact inputs
- Long-life lithium battery included
- 1/2" (13 mm) maximum magnet gap
- Low-battery LED indicator
- Case tamper
- Reliable 868 MHz technology
- Includes backplate

Approval Listings: European CE Directives (EMC, R&TTE, LVD), ICASA (South Africa)



Some products are not available in all countries. Contact your local distributor for details.

## Addressable

### Addressable Passive Infrared Detector AMB-300

- Based on the Bravo®3 hardwire motion detector
- Patented MLSP (Multi-Level Signal Processing)
- Interchangeable lenses: wall-to-wall lens (standard), curtain lens, pet-immune lens and corridor lens
- Built-in tamper switch

Approval Listings: European CE Directives (EMC), FCC/IC, UL/ULC



### Addressable Pet-Immune Passive Infrared Detector AMB-600

- Based on the Bravo®6 hardwire motion detector
- Patented MLSP (Multi-Level Signal Processing)
- Provides pet immunity up to 39 kg (85 lbs)
- Built-in tamper switch

Approval Listings: European CE Directives (EMC), FCC/IC, UL/ULC



### Addressable Ceiling-Mount Passive Infrared Detector AMB-500

- Based on the Bravo®5 hardwire motion detector
- Coverage diameter based on mounting height
- Built-in tamper switch

Approval Listings: European CE Directives (EMC), FCC/IC, UL/ULC



### Addressable Glassbreak Detector AMA-100

- Based on the Acuity® hardwire glassbreak detector
- Detects all types of breaking glass: plate, laminated, safety and tempered
- Can be tested using the glassbreak simulator (AFT-100)
- Built-in tamper switch

Approval Listings: European CE Directives (EMC), FCC/IC, UL/ULC



### FSB-210 Series Addressable Photoelectric Smoke Detectors FSB-210B (Without Heat Sensor) FSB-210BT (With Heat Sensor) – Fixed heat with rate of rise (non UL listed)

- Automatic drift compensation
- Easy-maintenance removable smoke chamber
- Non-contact sensitivity reading with handheld test meter (FSD-100)
- Self diagnostics
- Available in MEA only

Approval Listings: Not CE Listed, FCC/IC, UL/ULC



Some products are not available in all countries. Contact your local distributor for details.

## Addressable Contact Modules

Model	Description
AMP-700	Door/Window contact with built-in reed switch
AMP-701	Door/Window contact with normally closed external contact input
AMP-702	Fire point module with normally open, EOL resistor supervised external contact input
AMP-704	4-zone door/window contact with normally closed, single or double EOL inputs



AMP-700: Approval Listings: European CE Directives (EMC), FCC/IC, UL/ULC  
 AMP-701: Approval Listings: European CE Directives (EMC), FCC/IC, UL/ULC

AMP-702: Approval Listings: European CE Directives (EMC), FCC/IC, UL/ULC  
 AMP-704: Approval Listings: Not CE Listed, FCC/IC, UL/ULC

### Loop Isolator Module AML-770B

- Can be used to isolate burglary detectors from fire detectors on the same wire run

Approval Listings: European CE Directives (EMC), FCC/IC, UL/ULC



### Loop Repeater/Isolator Module AMX-400

- Can be used to repeat and re-power the AML loop to allow for longer wire runs
- Requires 12 VDC power source
- Will isolate the wire run in the event of a problem
- Provides additional 170 mA

Approval Listings: European CE Directives (EMC), FCC/IC, UL/ULC



Some products are not available in all countries. Contact your local distributor for details.

## Motion Detectors

### Bravo® 201 PIR Motion Detectors BV-201

The Bravo 201 motion detectors feature patented Multi-Level Signal Processing (MLSP) for accurate detection of human IR energy over a broad range of temperatures.

- Exceptional catch performance at elevated temperatures
- Sensitivity adjustment to configure the detector for normal or hostile environments
- High-level static and transient protection

Bravo 201: Approval Listings: European CE Directives (EMC), UL/ULC, , INCERT (Belgium), NCP (Holland)

Model	Description	Coverage Pattern
BV-201	Form 'A' alarm contact	<p>Wall-to-Wall Top View</p> <p>19.1m 130°</p> <p>0°</p> <p>15.2m 30°</p>
BV-L1	Wall-to-Wall lens	
BV-L2	Corridor lens	
BV-L3	Curtain lens	
BV-L4	Pet Alley lens	



### Bravo® 5 360° Ceiling-Mount PIR Motion Detectors

- Digital signal analysis for consistent detection throughout the coverage pattern
- Temperature compensation for improved catch performance at critical temperatures
- Patented Multi-Level Signal Processing (MLSP) for accurate detection of human IR energy over a broad range of temperatures
- Sensitivity adjustment to configure the detector for normal or hostile environments
- High-level static and transient protection
- Exceptional white light immunity
- Excellent RF immunity

#### PIR Only

Model	Description
BV-500	Form 'A' alarm contact
BV-501	Form 'A' alarm contact & tamper switch

BV-500: Approval Listings: European CE Directives (EMC), EN50131-2-2 Grade 2, Class II Environment, FCC/IC, UL/ULC  
 BV-501: Approval Listings: European CE Directives (EMC), INCERT (Belgium), NCP (Holland), EN50131-1 Grade 2, Class II Environment, FCC/IC, UL/ULC



#### PIR and Glassbreak

Model	Description
BV-500GB	Form 'A' alarm contact (motion), form 'C' alarm contact (glassbreak)
BV-501GB	Form 'A' alarm contact (motion), form 'C' alarm contact (glassbreak) & tamper switch

BV-500GB: Approval Listings: European CE Directives (EMC), EN50131-1 Grade 2, Class II Environment, FCC/IC, UL/ULC  
 BV-501GB: Approval Listings: European CE Directives (EMC), INCERT (Belgium), EN50131-1 Grade 2, Class II Environment, FCC/IC, UL/ULC

Some products are not available in all countries. Contact your local distributor for details.

## Bravo® 6 Twin, Dual-Element, Pet-Immune PIR Motion Detectors

- Digital signal analysis for consistent detection throughout the coverage pattern
- Digital temperature compensation for improved catch performance at critical temperatures
- Patented Multi-Level Signal Processing (MLSP) for accurate detection of human IR energy over a broad range of temperatures
- 38kg (85 lbs) pet immunity

Optional mounting brackets available: DM-W (wall-mount bracket) or DM-C (ceiling-mount bracket)

Model	Description
BV-600	Form 'A' alarm contact
BV-601	Form 'A' alarm contact & tamper switch

BV-600: Approval Listings: European CE Directives (EMC), EN50131-1 Grade 2, Class II Environment, FCC/IC, UL/ULC

BV-601: Approval Listings: European CE Directives (EMC), INCERT (Belgium), EN50131-1 Grade 2, Class II Environment, FCC/IC, UL/ULC



## Encore™ PIR Motion Detectors

Encore PIR motion detectors use a digital, microprocessor-controlled fresnel lens to deliver stable and accurate detection without sacrificing catch performance. Vertical Beam Shaping (VBS) provides pet immunity up to 27 kg (60 lbs), while a unique cover hinge allows the detector to be installed right up to the ceiling.

- Fresnel lens technology
- Digital signal analysis for consistent detection throughout the coverage pattern
- Digital temperature compensation
- Patented Multi-Level Signal Processing (MLSP)
- Vertical Beam Shaping (VBS) provides pet immunity up to 27 kg (60 lbs), available with EC301DP series
- Concealed wiring channel
- EC-BRKT swivel-mount bracket for the ultimate in detector location and installation flexibility (available separately)

Model	Description	Coverage Pattern
EC301	Form 'A' alarm contact	
EC301D	Digital, Form 'A' alarm contact & tamper switch	
EC301DP	Digital, Form 'A' alarm contact & tamper switch with pet immunity	

EC301: Approval Listings: FCC/IC, UL/ULC

EC301D: Approval Listings: European CE Directives (EMC), EN50131-1 Grade 2, Class II Environment, FCC/IC, UL/ULC

EC301DP: Approval Listings: European CE Directives (EMC), EN50131-1 Grade 2, Class II Environment, FCC/IC, UL/ULC



Some products are not available in all countries. Contact your local distributor for details.

## LC Series


### PIR Detector with Pet Immunity LC-100-PI-6PK

The LC-100-PI (Form A contact) detector feature intelligent signal analysis for reliable detection, pet immunity up to 25 kg (55 lbs) and a slim design that complements any décor.


- Form "A" alarm contact and tamper switch
- Digital signal analysis
- Pet immunity up to 25 kg (55 lbs)
- Quad Linear Imaging Technology for sharp analysis of body dimensions and differentiation from backgrounds and pets
- Advanced ASIC-based electronics
- Compact design for residential installations
- Adjustable variable pulse count
- PIR sensitivity adjustment
- Height installation calibration free
- Available in packages of 6 (LC-100-PI-6PK)
- LC-L1ST bracket available separately

Approval Listings: European CE Directives (EMC), FCC/IC, UL/ULC

Model	Description	Coverage Pattern
LC-100-PI-6PK	Form 'A' alarm contact & tamper switch	




Ceiling mount bracket



Wall mount bracket

**LC-L1ST brackets**




### PIR Detector with Camera (B&W/Color) & Pet Immunity LC-101

The LC-101 utilizes a camera to provide reliable detection and false alarm immunity. The motion detector features trouble-free installation and is ideal for those looking for a sophisticated residential solution or for commercial applications.

- Form 'A' alarm contact and tamper switch
- Digital signal analysis
- Pet immunity up to 25 kg (55 lbs)
- Quad Linear Imaging Technology for sharp analysis of body dimensions and differentiation from backgrounds and pets
- Advanced ASIC-based electronics
- Wide-range operating voltage
- High reliability, trouble-free operation
- User-friendly installation with or without swivel-mount bracket

Approval Listings: European CE Directives (EMC), FCC/IC, UL/ULC

Models Form 'A'	Description	Coverage Pattern
LC-101-CAMCLPAL	Color PAL	
LC-101-CAMCLNTSC	Color NTSC	
LC-101-CAMBWCCIR	B&W PAL	
LC-101-CAMBWEIA	B&W NTSC	



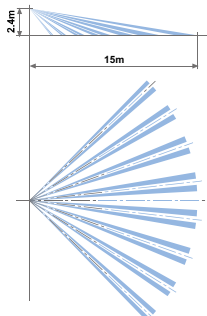
Some products are not available in all countries. Contact your local distributor for details.

## Glassbreak Detector with Pet Immunity LC-102-PIGBSS

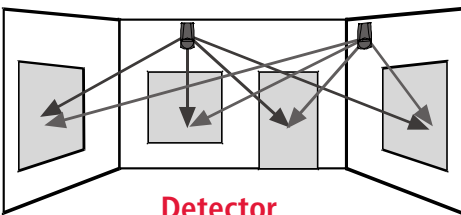
The LC-102-PIGBSS combines proven digital PIR and glassbreak detection technology with intelligent ASIC signal analysis.

- Form 'A' alarm contact and tamper switch
- Digital signal analysis
- Slim profile design
- Features ABS plastic for shock and impact protection
- Exceptional white light immunity
- Pet immunity up to 25 kg (55 lbs)
- Quad Linear Imaging Technology for sharp analysis of body dimensions and differentiation from backgrounds and pets
- Separate PIR and glassbreak sensitivity adjustment
- 2 independent relay outputs for glassbreak and PIR alarm signals
- Advanced ASIC-based electronics
- LC-L1ST bracket available separately

Approval Listings: European CE Directives (EMC), FCC

Model	Description	Coverage Pattern
LC-102-PIGBSS	Digital PIR and Glassbreak Detector with Pet Immunity	

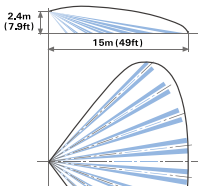
**Detector Mounting**




## PIR Detector with Pet Immunity LC-103-PIMSK-W & LC-104-PIMW-W

The LC-103-PIMSK-W and LC-104-PIMW-W are dual-technology motion detectors that combine passive infrared and microwave detection with pet immunity. LC-103-PIMSK-W also support anti-masking. The anti-masking feature prevents intruders from defeating the detector by covering its field of view.

- Anti-masking (LC-103-PIMSK-W)
- Form "A" alarm contact and tamper switch
- Digital signal analysis
- Pet immunity up to 25 kg (55 lbs)
- Quad Linear Imaging Technology for sharp analysis of body dimensions and differentiation from backgrounds and pets
- Microwave detection based on Doppler concept
- Unique microwave motion sensor module with micro-strip patch antenna
- Advanced ASIC-based electronics Height installation calibration free 2-way PIR/ microwave sensitivity adjustment
- User-friendly installation with or without swivel-mount bracket (available separately: LC-L1ST)

Model	Description	Coverage Pattern
LC-103-PIMSK-W	PIR and Microwave Detector with Anti-Masking and Pet Immunity (10.525 GHz)	
LC-103-PIMSK-IT	PIR and Microwave Detector with Anti-Masking and Pet Immunity (9.9 GHz)	
LC-103-PIMSK-UK	PIR and Microwave Detector with Anti-Masking and Pet Immunity (10.687 GHz)	
LC-104-PIMW-W	PIR and Microwave Detector with Pet Immunity (10.525 GHz)	
LC-104-PIMW-IT	PIR and Microwave Detector with Pet Immunity (9.9 GHz)	
LC-104-PIMW-UK	PIR and Microwave Detector with Pet Immunity (10.687 GHz)	



LC-103-PIMSK-W: Approval Listings: European CE Directives (EMC, R&TTE, LVD), FCC/IC, UL/ULC  
 LC-103-PIMSK-IT: Approval Listings: European CE Directives (EMC, R&TTE, LVD)  
 LC-103-PIMSK-UK: Approval Listings: European CE Directives (EMC, R&TTE, LVD)  
 LC-104-PIMW-W: Approval Listings: European CE Directives (EMC, R&TTE, LVD), FCC/IC, UL/ULC  
 LC-104-PIMW-IT: Approval Listings: European CE Directives (EMC, R&TTE, LVD)  
 LC-104-PIMW-UK: Approval Listings: European CE Directives (EMC, R&TTE, LVD)

Some products are not available in all countries. Contact your local distributor for details.

## Glassbreak Detector LC-105-DGB

The LC-105-DGB glassbreak detector distinguishes the sounds of breaking glass from other common sounds found in homes and businesses.

- Form 'A' alarm contact and tamper switch
- Digital signal analysis
- Detects the sound of all types of breaking framed glass
- Phased frequency detector sensor
- Able to adjust sound sensors separately
- Ceiling- or wall-mount installation
- Slim profile design
- Features ABS plastic for shock and impact protection

Approval Listings: European CE Directives (EMC), FCC



Model	Description
LC-105-DGB	Digital Glassbreak Detector

## Dual-Tech Outdoor Motion Sensor (Single PIR & Microwave) with adjustable Pet Immunity LC-151

The LC-151 is a unique motion detector utilizing a single passive infra-red element and Microwave technology and is designed for outdoor use in the most severe climatic conditions. The LC-151 can also accommodate pets with the addition of optional pet immunity lenses. High reliability is achieved by combining both dual tech hardware with highly sophisticated software, greatly reducing the possibility of false alarms.

- Microwave detection based on Doppler concept
- N.O. & N.C. relays switched at the same time
- Installation height is calibration free from 1.8 m to 2.4 m (6 ft to 8 ft)
- Pet Immune up to 15 kg (33 lbs) without pet immunity lens or up to 36 kg (80 lbs) when using supplied LC-F1-15X pet immunity lens
- PIR sensitivity adjustment
- MW intensity selection
- Temperature compensation
- Microcontroller signal processing
- Front and back tamper protection
- Unique waterproof and seal plastic design
- Detection range: up to 15 m (49 ft)
- Detects human intruders walking or running
- No maintenance required
- High RFI/EMI immunity
- Protection from: direct sunlight, wind up to 30 m/sec, snow and rain, small animals, removal of top cover and removal from mounting bracket
- Rain and dust proof: IP65

Approval Listings: FCC/IC, European CE Directives (EMC, R&TTE, LVD)

Model	Description	Coverage Pattern
LC-151	Form 'C' alarm contact and tamper switches	
	<p>LC-B1-15X Wall mount bracket</p>	

Some products are not available in all countries. Contact your local distributor for details.



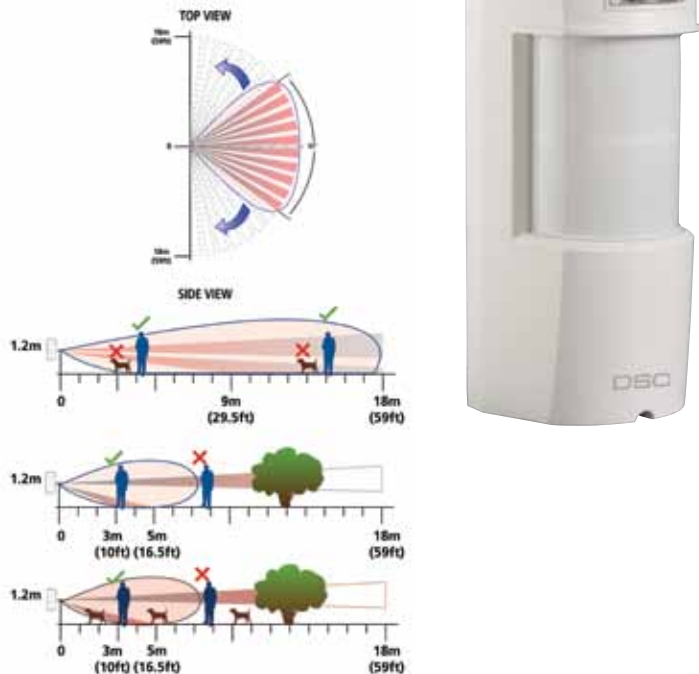
## Dual-Tech Outdoor Motion Sensor (Double PIR & Microwave) with Pet Immunity LC-171

The LC-171 is a unique motion detector utilizing dual passive infra-red elements and Microwave technology and is designed for outdoor use in the most severe climatic conditions. The LC-171 can also accommodate pets.

High reliability is achieved by combining both dual tech hardware with highly sophisticated software and an adaptive coverage area, greatly reducing the possibility of false alarms. The active elements are comprised of a dual element PIR and advanced Microwave detector inside a stylish, rigid plastic body.

- Frequency: 24.125 GHz
- Microwave detection based on Doppler concept
- N.O. & N. C. Relays switched at the same time
- Pet immunity up to 35 kg (77 lbs)
- 16 levels of PIR sensitivity adjustment and 3 microwave sensitivity groups
- Temperature compensation
- Microcontroller signal processing
- Front and back tamper protection
- Audible indication of walk test and intruder detection
- Unique waterproof sealed plastic design
- Detection range: up to 18 m (59 ft)
- Detect human intruders walking or running
- No maintenance required
- High RFI/EMI immunity
- Protection from: direct sunlight, wind up to 30 m/sec, snow and rain, small animals, removal of the top cover and removal from mounting bracket
- Rain and dust proof: IP65

Approval Listings: FCC/IC, European CE Directives (EMC, R&TTE, LVD)

Model	Description	Coverage Pattern
LC-171	Form 'C' alarm contact and tamper switches	 <p>The coverage pattern diagrams include a 'TOP VIEW' showing a fan-shaped detection area with a 18m (59ft) range. Below it are three 'SIDE VIEW' diagrams showing the sensor's height of 1.2m and its detection range of 18m (59ft). The diagrams illustrate detection of human intruders (blue figures) and pets (red dog and brown cat) within the sensor's field of view, and non-detection of a tree (green) and a window (white) outside the range. The sensor unit is a white, rectangular device with a 'DSC' logo at the bottom.</p>

Some products are not available in all countries. Contact your local distributor for details.

## Glassbreak Detectors

### Acuity® Glassbreak Detectors

- Omni-directional microphone
- Advanced microprocessor-based glassbreak sensor
- High-level static and transient protection
- High RF immunity with SMD construction
- White noise rejection mechanism
- Installer test mode for glassbreak sensor (AFT-100 tester required)
- Alarm memory (latching LED) for glassbreak sensor
- MOV transient/static protection
- Jumper selectable sensitivity range

#### Wall-Mount

Model	Description
AC-100	Form 'A' alarm contact
AC-101	Form 'A' alarm contact & tamper switch
AC-102	Form 'C' alarm contact & tamper switch

AC-100: Approval Listings: European CE Directives (EMC), EN50131-1 Grade 2, Class II Environment, FCC/IC, UL/ULC  
 AC-101: Approval Listings: European CE Directives (EMC), INCERT (Belgium), NCP (Holland), EN50131-1 Grade 2, Class II Environment, FCC/IC, UL/ULC  
 AC-102: Approval Listings: European CE Directives (EMC), EN50131-1 Grade 2, Class II Environment, FCC/IC, UL/ULC



#### Ceiling Mount

Model	Description
AC-500	Form 'A' alarm contact

AC-500: Approval Listings: European CE Directives (EMC), EN50131-1 Grade 2, Class II Environment, FCC/IC, UL/ULC

### Glassbreak Detector DG-50BU

- Form 'A' alarm contact and tamper contact
- Clean, modern design blends with any décor
- Advanced signal discrimination for accurate identification of breaking glass
- Resistant to blinding by background noises
- Sensitivity adjustment potentiometer
- Anti-shock design prevents false alarms from mechanical shock
- MOV static/lighting protection
- SMD construction and integral ground shield for high RF immunity

Approval Listings: FCC/IC



### Accessories: Glassbreak Simulator AFT-100

The AFT-100 glassbreak simulator provides the most reliable and accurate indication of the correct mounting location for the detector. Do not install the detector beyond the maximum recommended range, even if the glassbreak simulator reports additional range. Future changes in room acoustics could reduce any additional range.



### Shock Sensor SS-102

- Unique bi-colored LED to indicate minor or major attacks
- Anti-tamper protection
- Moisture-resistant electronics module
- High immunity to low-frequency false alarms and radio interference
- Sensitivity adjustment
- Compatible with all makes of control panels
- SS-102 is able to monitor for minor vibrations (and count them to a preset limit) and for major attacks at the same time

Approval Listings: European CE Directives (EMC), FCC/IC



Some products are not available in all countries. Contact your local distributor for details.

## Wired Photoelectric Smoke Detectors FSA-210/410

- Automatic drift compensation
- Built-in, dual-sensor heat detector (option)
- Built-in 85 dB horn (option)
- Easy-maintenance removable smoke chamber
- Interconnectable using PRM-2W/4W polarity reversal modules
- Non-contact sensitivity reading with handheld test meter (FSD-100)
- Low profile design
- Local test button

MEA Model 'B': Approval Listings: European CE Directives (EMC, R&TTE, LVD, CPD), FCC/IC, UL/ULC  
 European Model 'C': Approval Listings: European CE Directives (EMC, R&TTE, LVD, CPD)

### FSA-210

Model	Description
FSA-210(x)*	2-wire photoelectric smoke detector
FSA-210(x)T*	2-wire photoelectric smoke detector w/ heat detector
FSA-210(x)ST*	2-wire photoelectric smoke detector w/integral sounder & heat detector

### FSA-410

Model	Description
FSA-410(x)*	4-wire photoelectric smoke detector
FSA-410(x)R*	4-wire photoelectric smoke detector w/ aux. relay & heat detector
FSA-410(x)S*	4-wire photoelectric smoke detector w/ integral sounder
FSA-410(x)ST*	4-wire photoelectric smoke detector w/ integral sounder & heat detector
FSA-410(x)RST*	4-wire smoke detector w/integral sounder, aux, relay & heat detector
FSA-410(x)RT*	4-wire smoke detector w/aux, relay & heat detector
FSA-410(x)T*	4-wire smoke detector w/heat detector



\*Legend (x) = 'B' MEA model number | (x) = 'C' European model number

## Accessories

### PRM-2W

Polarity reversal module, PCB for panel mounting (2-wire interconnect)

### PRM-2WC

Polarity reversal module in plastic case (2-wire interconnect)

### PRM-4W

Polarity reversal module, PCB for panel mounting (4-wire interconnect)

### PRM-4WC

Polarity reversal module in plastic case (4-wire interconnect)

### RM-2

End-of-line power supervisory relay (4-wire detectors only)

PRM-2W: Approval Listings: Not CE Listed, FCC/IC, UL/ULC  
 PRM-4W: Approval Listings: Not CE Listed, FCC/IC, UL/ULC  
 RM-2: Approval Listings: Not CE Listed, UL/ULC



## Handheld Test Meter FSD-100

Precise and quick sensitivity testing is easily accomplished with the non-contact FSD-100 handheld test meter. Powered by a standard 9V alkaline battery and small enough to fit inside a shirt pocket, the FSD-100 holds 500 readings that can be downloaded to any computer. To initiate a reading, a technician simply holds the FSD-100 near a DSC smoke detector and activates the detector's test button.

Approval Listings: European CE Directives (EMC), FCC/IC, UL/ULC

Some products are not available in all countries. Contact your local distributor for details.

## Transmitters

### GSM/GPRS Wireless Alarm Communicator GS2065

- Back up and primary GSM/GPRS alarm communication
- Panel remote uploading/downloading support via GSM/GPRS
- Advanced remote and local programming via DSC DLS IV
- Supervision heartbeats via GSM/GPRS
- 128-bit AES encryption via GSM/GPRS
- Full event reporting
- Installer Code
- SIA format
- PC-Link connection
- Signal strength and trouble display
- Carrier Network Lock and SIM Lock\*
- Quad-Band: 850 MHz, 1900 MHz, 900 MHz and 1800 MHz
- Compatible with ALEXOR Wireless Panel
- Compatible with Sur-Gard® System I/II/III monitoring station receivers
- Antenna Extension Kit available: ANT-15Q, ANT-25Q, ANT 50Q



#### COMING SOON!

- Contact ID Protocol
- Command and Control Via SMS
- Full Event Notification Via SMS

Approvals: European CE Directives (EMC, R&TTE, LVD), FCC/IC, UL/ULC, ICASA (South Africa), CERT (Tunisia)  
\*Both features are pre-programmed features and available upon request of specific carrier networks.

### Internet and GSM/GPRS Dual-path Alarm Communicator TL265GS

- Fully redundant Internet and GSM/GPRS dual-path alarm communication
- Integrated call routing
- Panel remote uploading/downloading support via GSM/GPRS and Internet
- Advanced remote and local programming via DSC DLS IV
- Supervision heartbeats via GSM/GPRS and Internet
- 128-bit AES encryption via GSM/GPRS and Internet
- Full event reporting
- Installer Code
- SIA format
- PC-Link connection
- Signal strength and trouble display
- Carrier Network Lock and SIM Lock\*
- Quad-Band: 850 MHz, 1900 MHz, 900 MHz and 1800 MHz
- Compatible with ALEXOR Wireless Panel
- Compatible with Sur-Gard® System I/II/III monitoring station receivers
- Antenna Extension Kit available: ANT-15Q, ANT-25Q, ANT 50Q



#### COMING SOON!

- Contact ID Protocol
- Command and Control Via SMS
- Full Event Notification Via SMS

Approvals: European CE Directives (EMC, R&TTE, LVD), FCC/IC, UL/ULC, ICASA (South Africa), CERT (Tunisia)  
\*Both features are pre-programmed features and available upon request of specific carrier networks.

Some products are not available in all countries. Contact your local distributor for details.

## GSM/GPRS Wireless Alarm Communicator GS2060

- Back up and primary GSM/GPRS alarm communication
- Panel remote uploading/downloading support via GSM/GPRS
- Advanced remote and local programming via DSC DLS IV
- Supervision heartbeats via GSM/GPRS
- 128-bit AES encryption via GSM/GPRS
- Full event reporting
- Installer Code
- SIA format
- PC-Link connection
- Signal strength and trouble display
- Carrier Network Lock and SIM Lock\*
- Quad-Band: 850 MHz, 1900 MHz, 900 MHz and 1800 MHz
- Compatible with PC1864/1832/1616 control panel (version 4.1 and higher)
- Compatible with Sur-Gard® System I/II/III monitoring station receivers
- Antenna Extension Kit available: ANT-15Q, ANT-25Q, ANT-50Q

**COMING SOON!**

- Contact ID Protocol
- Command and Control Via SMS
- Full Event Notification Via SMS

Approvals: European CE Directives (EMC, R&TTE, LVD), FCC/IC, UL/ULC, ICASA (South Africa)

\*Both features are pre-programmed features and available upon request of specific carrier networks.



## Internet and GSM/GPRS Dual-path Alarm Communicator TL260GS

- Fully redundant Internet and GSM/GPRS dual-path alarm communication
- Integrated call routing
- Panel remote uploading/downloading support via GSM/GPRS and Internet
- Advanced remote and local programming via DSC DLS IV
- Supervision heartbeats via GSM/GPRS and Internet
- 128-bit AES encryption via GSM/GPRS and Internet
- Full event reporting
- Installer Code
- SIA format
- PC-Link connection
- Signal strength and trouble display
- Carrier Network Lock and SIM Lock\*
- Quad-Band: 850 MHz, 1900 MHz, 900 MHz and 1800 MHz
- Compatible with PC1864/1832/1616 control panel (version 4.1 and higher)
- Compatible with Sur-Gard® System I/II/III monitoring station receivers
- Antenna Extension Kit available: ANT-15Q, ANT-25Q, ANT-50Q

**COMING SOON!**

- Contact ID Protocol
- Command and Control Via SMS
- Full Event Notification Via SMS

Approvals: European CE Directives (EMC, R&TTE, LVD), FCC/IC, UL/ULC, ICASA (South Africa), CERT (Tunisia)

\*Both features are pre-programmed features and available upon request of specific carrier networks.



Some products are not available in all countries. Contact your local distributor for details.

## GSM/GPRS Universal Wireless Alarm Communicator GS3100-K

- Compatible with most control panels that communicate using the Contact ID format
- Back-up and primary GSM/GPRS alarm communication
- Uses GPRS data channel for high-speed, reliable and low-cost communications to Sur-Gard System I, System II and III receiver
- Antenna with magnetic base and 2 m cable
- 3 open collector outputs, 4 phone numbers programmable for Contact ID Dialer on GPRS
- Up to 100 telephone numbers (max. 16 digits) programmable for the remote activation of the OC output
- Low current draw allows powering the unit from most alarm panels
- PC-programmable options
- Quad-band: 850 MHz, 1900 MHz, 900 MHz and 1800 MHz

Approval Listings: European CE Directives (EMC, R&TTE, LVD)



## GSM/GPRS Universal Wireless Alarm Communicator GS3055-IGW

- Compatible with most control panels that communicate using the Contact ID format
- Full event reporting
- Primary or backup alarm communicator
- Uses GPRS data channel for high-speed, reliable and low-cost communications to Sur-Gard System I, System II and III receiver
- 4 on-board programmable inputs
- 4 programmable outputs (open collector)
- SMS dialer feature allows 13 preset text messages to be sent upon alarm events
- Up to 8 programmable phone numbers for SMS dialer
- Up to 95 phone numbers to control the programmable outputs
- SMS message remote programming
- Simple programming via PC software
- 4 status LEDs to indicate signal strength and operation
- Dual-band GSM (900 MHz/1800 MHz)
- Antenna Extension Kit available: ANT-15, ANT-25, ANT-50.

Approval Listings: European CE Directives (EMC, R&TTE, LVD), UL/ULC, FCC/IC



## T-Link Residential IP Alarm Communicator TL150

- Supports PowerSeries control panels
- Instant, always-on IP communication
- Works over local LAN/WAN network or the Internet
- 128-bit AES encryption
- Compatible with 10/100BaseT networks
- Supervised as a KEYBUS module (supervision of both KEYBUS and network connections)
- Supports DHCP (dynamic IP addresses)
- Low network bandwidth usage
- T-Link programming (IP address and account number) through a web-browser interface
- Homeowners can arm/disarm security system and view zone status through a webpage on their home computer
- Compatible with Sur-Gard System I/III/III monitoring station receivers

Approval Listings: European CE Directives (EMC), FCC/IC



Some products are not available in all countries. Contact your local distributor for details.

## T-Link Internet/Intranet Alarm Communicator TL250CE

- Supports PowerSeries (version 3.24 and higher) and MAXSYS (version 3.31 and higher) control panels
- Instant, always-on IP communication
- Works over local LAN/WAN network or the Internet
- 128-bit AES encryption (NIST approved)
- Supports DHCP (dynamic IP addresses)
- Low network bandwidth requirements
- Compatible with 10/100BaseT networks
- Reports events to 2 different receiver IP addresses
- Polling and hardware substitution protection
- 4 on-board programmable inputs and 2 programmable voltage outputs as standalone module
- Programmable through the PK5500 LCD keypad or T-Link Console software
- Software upgrades via network
- Download control panel via Internet with DLS software
- Compatible with Sur-Gard System I/II/III monitoring station receivers

Approval Listings: European CE Directives (EMC), UL/ULC, FCC/IC



## T-Link Internet/Intranet Alarm Communicator TL260

- Panel remote uploading & downloading via internet/intranet using DLS IV
- Programmable using DLS IV or keypad
- Supervision heartbeat via internet/intranet
- 128 Bit AES Encryption
- Full event format
- SIA format

Approval Listings: European CE Directives (EMC, R&TTE, LVD)



## T-Link Internet/Intranet Alarm Communicator TL265

- Panel remote uploading & downloading via internet/intranet using DLS IV
- Programmable using DLS IV or keypad
- Supervision heartbeat via internet/intranet
- 128 Bit AES Encryption
- Full event format
- SIA and Contract ID format
- PC-Link connection
- Compatible with ALEXOR
- UL Standard & encrypted line security
- ULC Passive or active security levels
- Supports DHCP or static IP addresses

Approval Listings: European CE Directives (EMC, R&TTE, LVD)



## T-Link Universal IP Alarm Communicator TL300CE

- Compatible with most control panels that communicate using the Contact ID format
- Instant, always-on IP communication
- Works over local LAN/WAN network or the Internet
- 128-bit AES encryption (NIST approved)
- Supports DHCP (dynamic IP addresses)
- Low network bandwidth requirements
- Compatible with 10/100BaseT networks
- Reports events to 2 different receiver IP addresses
- Polling and hardware substitution protection
- 4 on-board programmable zone inputs and 2 programmable voltage outputs as standalone module
- Programmable through the PK5500 LCD keypad or T-Link Console software
- Software upgrades via network
- Compatible with Sur-Gard System I/II/III monitoring station receivers
- 12-24 V support (version 1.5 only)

Approval Listings: European CE Directives (EMC), UL/ULC, FCC/IC



Some products are not available in all countries. Contact your local distributor for details.

## Sur-Gard Monitoring Station Receivers & Line Card Modules

### Dual Phone Line With Optional IP Receiver SG-SYSTEM II/ SG-SYSTEM I-IP

- Multi-format receiver
- Integrated scheduled receiver line card testing
- Up to 63 different profiles and up to eight different handshakes per profile
- 500-event memory buffer on each individual line card
- Patented ANI and DNIS reception, Automatic Handshake Selection (AHS), Caller ID capability and virtual configurations
- Continuous verification of computer(automation) connection
- One parallel, one serial, one USB, one TCP/IP printer port available
- One serial, one TCP/IP automation port available
- One USB, one TCP/IP console port available
- Non-volatile RAM for programming and event buffer
- Optional support for 512 IP Communicators
- Rack mount in standard 19-inch rack with the SG-SII-RMK
- 128 Bit AES encryption over IP
- Menu-driven, 40-character, 2-line LCD display with blue backlighting provides instruction when in manual mode
- 4 buttons for manual programming and acknowledgement of alarm signals when in manual mode
- Universal power supply compatible with 110/220 50 Hz/60 Hz
- Onboard flash memory and DSP for future software upgrades and enhancements



Approval Listings: FCC/IC, UL/ULC, European CE Directives (EMC, R&TTE, LVD)

### Single-Line IP Receiver SG-SYSTEM II

- Value-priced remote monitoring solution ideal for lower-volume applications
- Supports up to 512 supervised and up to 1,536 IP communicator accounts (TL150, TL250, TL300, TL260, TL260GS, TL265, TL265GS, GS30551CF, GS3060, GS2060, GS2065)
- Rack mount in standard 19-inch rack with the SG-SII-RMK
- TCP/IP, USB, serial outputs to automation software
- 128-bit AES encryption
- Works over local LAN/WAN network as well as the Internet
- Polling and hardware substitution protection
- Compatible with 10/100BaseT networks
- Fully programmable via SG-Systems Console software
- Menu-driven, 40-character, 2-line LCD display with blue backlighting provides instruction when in manual mode
- 4 buttons for manual programming and acknowledgement of alarm signals when in manual mode
- Universal power supply compatible with 110/220 50 Hz/60 Hz
- Onboard flash memory and DSP for future software upgrades and enhancements



Approval Listings: FCC/IC, UL/ULC, European CE Directives (EMC)

Some products are not available in all countries. Contact your local distributor for details.



## Sur-Gard Monitoring Station Receivers & Line Card Modules

### Virtual Receiver SG-SYSTEM III

- Up to 24 line cards per System III receiver SG-DRL3IP or SG-DRL3 STD
- Fully "hot-swappable" modules
- Fully programmable via SG-System III Console software
- Eliminates fixed-line hunt groups
- Integrated scheduled receiver line card testing
- Blocks unwanted communications
- Requires less physical space
- Upgradeable flash memory
- Automation output over TCP/IP or RS-232
- CE approved

Approval Listings: FCC/IC, UL/ULC, European CE Directives (EMC, R&TTE, LVD)



### POTS Line Card For SYSTEM III SG-DRL3STD

- Maximizes use of all line cards (SG-DRL3STD)
- Patented ANI and DNIS reception
- Patented Caller ID
- Patented Automatic Handshake Selection (AHS)
- Reduces phone charges
- Advanced 2-way audio integration
- CE approved

Approval Listings: FCC/IC, UL



### Network Line Card For SYSTEM III SG-DRL3-IP

- Each line card supports up to 512 supervised and up to 1,536 total
- IP communicator accounts (TL150, TL250, TL260, TL300, TL260GS, TL265GS, GS3055-IGW, GS3060, GS2060, GS2065)
- Instant, always-on IP communication
- Works over local LAN/WAN network as well as the Internet
- 128-bit AES encryption
- Polling and hardware substitution protection
- Compatible with 10/100BaseT networks
- High-security network monitoring
- UL standard & encrypted line security
- CE approved

Approval Listings: FCC/IC, UL



Some products are not available in all countries. Contact your local distributor for details.



## DSC Services & Support

DSC understands that security dealers everywhere need more than just great products, they deserve exceptional service and support as well. That is why we have committed resources to ensure we're in a position to help our customers as needed.

### DSC Customer Help Center

A dedicated team of Technical Support and Inside Sales Representatives stands ready to provide security dealers with valuable expertise and in-depth product knowledge. The Customer Help Center offers extended hours of services, access to all departments within DSC, and multilingual support in 3 languages. The Customer Help Center is ready to provide you with the exceptional service, support and value you have come to expect from DSC.

For technical support, call +1-905-760-3000 or e-mail us at [tech@dsc.com](mailto:tech@dsc.com). For general product information or the location of the nearest DSC distributor, please call +1-905-760-3000 or e-mail us at [info@dsc.com](mailto:info@dsc.com).

### DSC Marketplace.com

The DSC Marketplace.com is intended to be your primary method for ordering product-specific literature, associated marketing support materials and promotional items. To gain access to this great service, please visit [www.dscmarketplace.com](http://www.dscmarketplace.com) and complete the short registration form. Upon completion, your account will be activated within 48 hours allowing you to start browsing the site at your convenience. To ensure proper materials are being ordered, you can view thumbnail pictures as well as download PDF files of all items. For more information or comments, please visit [www.dscmarketplace.com](http://www.dscmarketplace.com).

### [www.dsc.com](http://www.dsc.com)

The DSC website is an intuitive, easy-to-navigate resource that provides security professionals with access to a wealth of product-specific information. Password-protected areas are tailored specifically for security dealers and offer the latest news on DSC products, corresponding events and launches, the latest technical support materials and diagnostic tools, and helpful industry and association links. Visit [www.dsc.com](http://www.dsc.com) to learn more.

Downloadable PDF versions of all DSC security products, sales and specification sheets, end-user manuals, architect and engineer specifications, plus the complete DSC product catalog can be found on the website.



Some products are not available in all countries. Contact your local distributor for details.

MODEL	APPROVAL LISTINGS
<b>WIRELESS</b>	
Alexor 2-Way Wireless Panel PC9155	European CE Directives (EMC, R&TTE, LVD)
2-Way Wireless Wire-Free Keypad WT5500	European CE Directives (EMC, R&TTE, LVD)
Self-Contained Wireless Alarm System PowerSeries 9045	European CE Directives (EMC, R&TTE, LVD), FCC/IC, UL/ULC
<b>POWERSERIES</b>	
PowerSeries Control Panel PC585	European CE Directives (EMC, R&TTE, LVD), INCERT (Belgium), FCC/IC, CERT (Tunisia)
PowerSeries Control Panel PC1616	European CE Directives (EMC, R&TTE, LVD), INCERT (Belgium), NCP (Holland), NFA2P Type 2 (France), IMQ (Italy) Livello 2, SBSC (Sweden) Larmklass 2, EN50131-1/-3/-6 Grade 2, Class II Environmental, ICASA (South Africa), FCC/IC, UL/ULC, F&P Class 2 Grade 2 (Denmark), SVK Class 2 Grade 2 (Finland), FG Class 2 Grade 2 (Norway), ETA (Ethiopia)
PowerSeries Control Panel PC1832	European CE Directives (EMC, R&TTE, LVD), INCERT (Belgium), NCP (Holland), NFA2P Type 2 (France), IMQ (Italy) Livello 2, SBSC (Sweden) Larmklass 2, EN50131-1/-3/-6 Grade 2, Class II Environmental, ICASA (South Africa), FCC/IC, UL/ULC, F&P Class 2 Grade 2 (Denmark), SVK Class 2 Grade 2 (Finland), FG Class 2 Grade 2 (Norway), ETA (Ethiopia)
PowerSeries Control Panel PC1864	European CE Directives (EMC, R&TTE, LVD), INCERT (Belgium), NCP (Holland), NFA2P Type 2 (France), IMQ (Italy) Livello 2, SBSC (Sweden) Larmklass 2, EN50131-1/-3/-6 Grade 2, Class II Environmental, ICASA (South Africa), FCC/IC, UL/ULC, F&P Class 2 Grade 2 (Denmark), SVK Class 2 Grade 2 (Finland), FG Class 2 Grade 2 (Norway), ETA (Ethiopia)
PowerSeries 64-Zone LCD Full-Message Keypad PK5500 RFK5500 with built-in wireless receiver	European CE Directives (EMC), INCERT (Belgium), NCP (Holland), NFA2P Type 2 (France), IMQ (Italy) Livello 2, SBSC (Sweden) Larmklass 2, EN50131-1 Grade 2**, Class II Environmental, FCC/IC, UL/ULC, F&P Grade 2 (Denmark), SVK Grade 2 (Finland), FG Grade 2 (Norway)
PowerSeries 64-Zone LCD Picture Icon Keypad PK5501 RFK5501 with built-in wireless receiver	European CE Directives (EMC), INCERT (Belgium), IMQ (Italy) Livello 2, SBSC (Sweden) Larmklass 2, EN50131-1 Grade 2**, Class II Environmental, FCC/IC, UL/ULC, F&P Grade 2 (Denmark), SVK Grade 2 (Finland), FG Grade 2 (Norway), NCP (Holland)
PowerSeries 16-Zone LED Keypad PK5516 RFK5516 with built-in wireless receiver	European CE Directives (EMC), INCERT (Belgium), IMQ (Italy) Livello 2, SBSC (Sweden) Larmklass 2, EN50131-1 Grade 2**, Class II Environmental, FCC/IC, UL/ULC, F&P Grade 2 (Denmark), SVK Grade 2 (Finland), FG Grade 2 (Norway), NCP (Holland)
PowerSeries 8-Zone LED Keypad PK5508 RFK5508 with built-in wireless receiver	European CE Directives (EMC), INCERT (Belgium), IMQ (Italy) Livello 2, SBSC (Sweden) Larmklass 2, EN50131-1 Grade 2**, Class II Environmental, FCC/IC, UL/ULC, F&P Grade 2 (Denmark), SVK Grade 2 (Finland), FG Grade 2 (Norway), NCP (Holland)
PowerSeries 8-Zone LED Keypad LED5511Z	European CE Directives (EMC), FCC/IC, UL/ULC
PowerSeries 64-Zone Icon LCD Keypad LCD5511	European CE Directives (EMC), FCC/IC, UL/ULC
PowerSeries 8-Zone LED Keypad PC1555RKZ	European CE Directives (EMC), FCC/IC, UL/ULC, CERT (Tunisia)
PowerSeries Addressable Zone Expander PC5100	European CE Directives (EMC), FCC/IC, UL/ULC
PowerSeries 8-Hardwire Zone Expander PC5108	European CE Directives (EMC), INCERT (Belgium), NCP (Holland), NFA2P Type 2 (France), IMQ (Italy) Livello 2, SBSC (Sweden) Larmklass 2, EN50131-1 Grade 2, Class II Environmental, FCC/IC, UL/ULC, CERT (Tunisia)
PowerSeries Wireless Receivers RF5132-433 & RF5132-868	RF5132-433: Approval Listings: European CE Directives (EMC, R&TTE, LVD), INCERT (Belgium), NCP (Holland), IMQ (Italy) Livello 2, Class II Environmental, ICASA (South Africa), FCC/IC, UL/ULC RF5132-868: Approval Listings: European CE Directives (EMC, R&TTE, LVD), ICASA (South Africa)
PowerSeries Power Supply Modules PC5200 & PC5204	PC5200: Approval Listings: European CE Directives (EMC), FCC/IC, UL/ULC PC5204: Approval Listings: European CE Directives (EMC), INCERT (Belgium), NCP (Holland), NFA2P Type 2 (France), IMQ (Italy) Livello 2, SBSC (Sweden) Larmklass 2, EN50131-1 Grade 2, Class II Environmental, FCC/IC, UL/ULC

Some products are not available in all countries. Contact your local distributor for details.

MODEL	APPROVAL LISTINGS
<b>PowerSeries Programmable Output Module PC5208</b>	European CE Directives (EMC), INCERT (Belgium), NCP (Holland), IMQ (Italy) Livello 2, SBSC (Sweden) Larmklass 2, EN50131-1 Grade 2, Class II Environmental, FCC/IC, UL/ULC
<b>INTEGRATION</b>	
<b>PowerSeries Multiple Wireless Receiver Module PC5320</b>	European CE Directives (EMC), INCERT (Belgium), NCP (Holland), FCC/IC, UL/ULC
<b>PowerSeries Printer Interface Module PC5400</b>	European CE Directives (EMC), INCERT (Belgium), NCP (Holland), FCC/IC, UL/ULC
<b>PowerSeries Telephone Interface &amp; Automation Control Module ESCORT 5580TC</b>	European CE Directives (EMC, R&TTE, LVD), INCERT (Belgium), NCP (Holland), NFA2P Type 2 (France), FCC/IC, UL/ULC
<b>PowerSeries Status Module PC5601</b>	Not CE Listed
<b>PowerSeries Integration Module IT-100</b>	European CE Directives (EMC), FCC/IC
<b>AUDIO VERIFICATION</b>	
<b>Universal 2-Way VOX Audio Verification Module PC5950</b>	European CE Directives (EMC, R&TTE, LVD), FCC/IC
<b>Stand-Alone Audio Station PC5961</b>	European CE Directives (EMC), FCC/IC
<b>Contoured Audio Station PC5962</b>	European CE Directives (EMC), FCC/IC
<b>Large Speaker Station PC5964</b>	European CE Directives (EMC), FCC/IC
<b>FIRE PANELS</b>	
<b>CONVENTIONAL FIRE PANEL CFD4800</b>	
2 zone fire control panel CFD4802	European CE Directives (EMC, CPD)
4 zone fire control panel CFD4804	European CE Directives (EMC, CPD)
8 zone fire control panel CFD4808	European CE Directives (EMC, CPD)
8 expandable to 24 zone fire control panel CFD4824	European CE Directives (EMC, CPD)
Repeater panel for CFD series CFD4001	European CE Directives (EMC, CPD)
Display module J400-LCD	European CE Directives (EMC, CPD)
Serial interface module PCJ400BRIDGE	European CE Directives (EMC, CPD)
Extinguisher module with microprocessor control CFD4808EXT	European CE Directives (EMC, CPD)
8 zone expander module for CFD4824 panels J400EXP8	European CE Directives (EMC, CPD)
<b>ADDRESSABLE FIRE PANELS AFD2000</b>	
One Loop Addressable Fire Panel AFD2010	European CE Directives (EMC, CPD)
Two Loop Addressable Fire Panel AFD2020	European CE Directives (EMC, CPD)
Repeater Display Module AFD2001	European CE Directives (EMC, CPD)
<b>MAXSYS</b>	
<b>MAXSYS Control Panel PC4020</b>	European CE Directives (EMC, R&TTE, LVD), INCERT (Belgium), FCC/IC, UL/ULC, SBSC (Sweden), ETA (Ethiopia)
<b>MAXSYS Programmable-Message LCD Keypad LCD4501</b>	European CE Directives (EMC), INCERT (Belgium), FCC/IC, UL/ULC
<b>MAXSYS 8/16 Hardwire Zone Expanders PC4108A &amp; PC4116</b>	PC4108A: Approval Listings: European CE Directives (EMC), INCERT (Belgium), FCC/IC, UL/ULC PC4116: Approval Listings: FCC/IC, UL/ULC, Not CE Listed
<b>MAXSYS Power Supply/Relay Output/Combustion Repeater Module PC4204/ PC4204CX</b>	European CE Directives (EMC), INCERT (Belgium), FCC/IC, UL/ULC
<b>MAXSYS 16 Low Current Output Module PC4216</b>	European CE Directives (EMC), FCC/IC, UL/ULC
<b>MAXSYS Data Interface Module PC4401</b>	European CE Directives (EMC), FCC/IC, UL/ULC
<b>MAXSYS Telephone Interface and Automation Control Module ESCORT4580</b>	European CE Directives (EMC, R&TTE, LVD), FCC/IC, UL/ULC
<b>MAXSYS 32/64 Point Graphic Annunciators PC4632 &amp; PC4664</b>	PC4632: Approval Listings: Not CE Listed, FCC/IC, UL PC4664: Approval Listings: European CE Directives (EMC), FCC/IC
<b>MAXSYS 2-Reader Access Control Module PC4820</b>	European CE Directives (EMC), FCC/IC, UL/ULC

Some products are not available in all countries. Contact your local distributor for details.

MODEL	APPROVAL LISTINGS
<b>433 &amp; 868 MHz WIRELESS</b>	
<b>2-Way Wireless Key WT4989/ WT8989</b>	433 Approval Listings: European CE Directives (EMC, R&TTE, LVD), ICASA (South Africa), UL/ULC, FCC/IC, CERT (Tunisia) 868 Approval Listings: European CE Directives (EMC, R&TTE, LVD)
<b>1-Button Personal Panic WS4938W/ WS8938W</b>	433 Approval Listings: European CE Directives (EMC, R&TTE, LVD), FCC/IC, UL/ULC, ICASA (South Africa) 868 Approval Listings: European CE Directives (EMC, R&TC LVD), ICASA (South Africa)
<b>2-Button Personal Panic WS4938-2W</b>	Approval Listings: European CE Directives (EMC, R&TTE, LVD)
<b>4-Button Wireless Key WS4939EU/WS8939W</b>	433 Approval Listings: European CE Directives (EMC, R&TTE, LVD), INCERT (Belgium), NCP (Holland), IMQ (Italy) Livello 1, SBSC (Sweden) Larmklass R, EN50131-3, EN50131-6, Grade 2, Class II Environment, CERT (Tunisia), ICASA (South Africa), FCC/IC, UL/ULC, F&P (Denmark) 868 Approval Listings: European CE Directives (EMC, R&TTE, LVD), SBSC (Sweden) Larmklass R, F&P (Denmark), FG Grade 2 (Norway), ICASA (South Africa)
<b>Wireless Door/Window Contact WS4945W/ WS8945W</b>	433 Approval Listings: European CE Directives (EMC, R&TTE, LVD), INCERT (Belgium), NCP (Holland), IMQ (Italy) Livello 1, SBSC (Sweden) Larmklass R, EN50131-2-6, EN50131-6, Grade 2, Class II Environment, ICASA (South Africa), FCC/IC, UL/ULC, F&P (Denmark), CERT (Tunisia) 868 Approval Listings: European CE Directives (EMC, R&TTE, LVD), SBSC (Sweden) Larmklass R, F&P (Denmark), FG Grade 2 (Norway), ICASA (South Africa)
<b>Vanishing Contact WS4975W</b>	Approval Listings: European CE Directives (EMC, R&TTE, LVD)
<b>Wireless Passive Infrared Detector WS4904W/WS4904PW /WS8904W/WS8904PW</b>	433 Approval Listings: European CE Directives (EMC, R&TTE, LVD), INCERT (Belgium), NCP (Holland), IMQ (Italy) Livello 1, SBSC (Sweden) Larmklass R, EN50131-2-2, EN50131-6, Grade 2, Class II Environment, ICASA (South Africa), FCC/IC, UL/ULC, F&P (Denmark), CERT (Tunisia) 868 Approval Listings: European CE Directives (EMC, R&TTE, LVD), SBSC (Sweden) Larmklass R, F&P (Denmark), FG Grade 2 (Norway), ICASA (South Africa)
<b>Wireless CO Detector WS4913 EU/WS8913 EU</b>	Approval Listings: EN in progress, FCC/IC, UL/ULC
<b>Wireless Photoelectric Smoke Detector WS4916 EU/WS8916W</b>	433 Approval Listings: European CE Directives (EMC, R&TTE, LVD, CPD), ICASA (South Africa), ANPI (Belgium), CERT (Tunisia), FCC/IC, UL/ULC 868 Approval Listings: European CE Directives (EMC, R&TTE, LVD, CPD), ICASA (South Africa), ANPI (Belgium)
<b>2-Way Wireless Indoor Siren WT4901/WT8901</b>	European CE Directives (EMC, R&TTE, LVD), FCC/IC, UL/ULC, CERT (Tunisia)
<b>2-Way Wireless Outdoor Siren WT4911/WT8911</b>	European CE Directives (EMC, R&TTE, LVD), FCC/IC, UL/ULC, CERT (Tunisia)
<b>Wireless Flood Detector WS4985W/WS8985W</b>	FCC/IC, European CE Directives (EMC, R&TTE, LVD)
<b>Wireless Glassbreak Detector WLS912L-433W</b>	Approval Listings: European CE Directives (EMC, R&TTE, LVD), FCC/IC, UL/ULC, INCERT (Belgium), NCP (Holland), Class II Environment, ICASA (South Africa)
<b>Wireless Device Programmer WP-433</b>	—
<b>Tri-Zone Wireless Door/Window Contact WS8965W</b>	European CE Directives (EMC, R&TTE, LVD), ICASA (South Africa)
<b>ADDRESSABLE</b>	
<b>Addressable Passive Infrared Detector AMB-300</b>	European CE Directives (EMC), FCC/IC, UL/ULC
<b>Addressable Pet-Immune Passive Infrared Detector AMB-600</b>	European CE Directives (EMC), FCC/IC, UL/ULC
<b>Addressable Ceiling-Mount Passive Infrared Detector AMB-500</b>	European CE Directives (EMC), FCC/IC, UL/ULC
<b>Addressable Glassbreak Detector AMA-100</b>	European CE Directives (EMC), FCC/IC, UL/ULC

Some products are not available in all countries. Contact your local distributor for details.

MODEL	APPROVAL LISTINGS
<b>FSB-210 Series Addressable Photoelectric Smoke Detectors</b> (Without Heat Sensor) FSB-210B (With Heat Sensor) – Fixed heat with rate of rise FSB-210BT (non UL listed)	Not CE Listed, FCC/IC, UL/ULC
<b>ADDRESSABLE CONTACT MODULES</b>	
<b>Door/Window contact with built-in reed switch AMP-700</b>	European CE Directives (EMC), FCC/IC, UL/ULC
<b>Door/Window contact with normally closed input AMP-701</b>	European CE Directives (EMC), FCC/IC, UL/ULC
<b>Fire point module with normally open, EOL resistor supervised input AMP-702</b>	European CE Directives (EMC), FCC/IC, UL/ULC
<b>4-zone door/window contact with normally closed, single or double EOL inputs AMP-704</b>	Not CE Listed, FCC/IC, UL/ULC
<b>Loop Isolator Module AML-770B</b>	European CE Directives (EMC), FCC/IC, UL/ULC
<b>Loop Repeater/Isolator Module AMX-400</b>	European CE Directives (EMC), FCC/IC, UL/ULC
<b>MOTION DETECTORS</b>	
<b>BRAVO® 201 PIR MOTION DETECTORS BV-201</b>	
<b>Form 'A' alarm contact BV-201</b>	European CE Directives (EMC), UL/ULC, , INCERT (Belgium), NCP (Holland)
<b>Wall-to-Wall lens BV-L1</b>	European CE Directives (EMC), UL/ULC, , INCERT (Belgium), NCP (Holland)
<b>Corridor lens BV-L2</b>	European CE Directives (EMC), UL/ULC, , INCERT (Belgium), NCP (Holland)
<b>Curtain lens BV-L3</b>	European CE Directives (EMC), UL/ULC, , INCERT (Belgium), NCP (Holland)
<b>Pet Alley lens BV-L4</b>	European CE Directives (EMC), UL/ULC, , INCERT (Belgium), NCP (Holland)
<b>BRAVO® 5 360° CEILING-MOUNT PIR MOTION DETECTORS</b>	
<b>Form 'A' alarm contact BV-500</b>	European CE Directives (EMC), EN50131-2-2 Grade 2, Class II Environment, FCC/IC, UL/ULC
<b>Form 'A' alarm contact &amp; tamper switch BV-501</b>	European CE Directives (EMC), INCERT (Belgium), NCP (Holland), EN50131-1 Grade 2, Class II Environment, FCC/IC, UL/ULC
<b>PIR AND GLASSBREAK</b>	
<b>Form 'A' alarm contact (motion), form 'C' alarm contact (glassbreak) BV-500GB</b>	European CE Directives (EMC), EN50131-1 Grade 2, Class II Environment, FCC/IC, UL/ULC
<b>Form 'A' alarm contact (motion), form 'C' alarm contact (glassbreak) &amp; tamper switch BV-501GB</b>	European CE Directives (EMC), INCERT (Belgium), EN50131-1 Grade 2, Class II Environment, FCC/IC, UL/ULC
<b>BRAVO® 6 TWIN, DUAL-ELEMENT, PET-IMMUNE PIR MOTION DETECTORS</b>	
<b>Form 'A' alarm contact BV-600</b>	European CE Directives (EMC), EN50131-1 Grade 2, Class II Environment, FCC/IC, UL/ULC
<b>Form 'A' alarm contact &amp; tamper switch BV-601</b>	European CE Directives (EMC), INCERT (Belgium), EN50131-1 Grade 2, Class II Environment, FCC/IC, UL/ULC
<b>ENCORE™ PIR MOTION DETECTORS</b>	
<b>Form 'A' alarm contact EC301</b>	FCC/IC, UL/ULC
<b>Digital, Form 'A' alarm contact &amp; tamper switch EC-301D</b>	European CE Directives (EMC), EN50131-1 Grade 2, Class II Environment, FCC/IC, UL/ULC
<b>Digital, Form 'A' alarm contact &amp; tamper switch with pet immunity EC-301DP</b>	European CE Directives (EMC), EN50131-1 Grade 2, Class II Environment, FCC/IC, UL/ULC
<b>LC SERIES</b>	
<b>PIR Detector with Pet Immunity LC-100-PI-6PK</b>	
<b>Form 'A' alarm contact &amp; tamper switch LC-100-PI-6PK</b>	European CE Directives (EMC), FCC/IC, UL/ULC
<b>PIR DETECTOR WITH CAMERA (B&amp;W/COLOR) &amp; PET IMMUNITY LC-101</b>	
<b>Color PAL LC-101-CAMCLPAL</b>	European CE Directives (EMC), FCC/IC, UL/ULC
<b>Color NTSC LC-101-CAMCLNTSC</b>	European CE Directives (EMC), FCC/IC, UL/ULC
<b>B&amp;W PAL LC-101-CAMBWCCIR</b>	European CE Directives (EMC), FCC/IC, UL/ULC
<b>B&amp;W PAL LC-101-CAMBWEIA</b>	European CE Directives (EMC), FCC/IC, UL/ULC

Some products are not available in all countries. Contact your local distributor for details.

MODEL	APPROVAL LISTINGS
<b>GLASSBREAK DETECTOR WITH PET IMMUNITY LC-102-PIGBSS</b>	
Digital PIR and Glassbreak Detector with Pet Immunity LC-102-PIGBSS	European CE Directives (EMC), FCC
<b>PIR DETECTOR WITH PET IMMUNITY LC-103-PIMSK-W &amp; LC-104-PIMW-W</b>	
PIR and Microwave Detector with Anti-Masking and Pet Immunity (10.525 GHz) LC-103-PIMSK-W	European CE Directives (EMC, R&TTE, LVD), FCC/IC, UL/ULC
PIR and Microwave Detector with Anti-Masking and Pet Immunity (9.9 GHz) LC-103-PIMSK-IT	European CE Directives (EMC, R&TTE, LVD)
PIR and Microwave Detector with Anti-Masking and Pet Immunity (10.687 GHz) LC-103-PIMSK-UK	European CE Directives (EMC, R&TTE, LVD)
PIR and Microwave Detector with Pet Immunity (10.525 GHz) LC-104-PIMW-W	European CE Directives (EMC, R&TTE, LVD), FCC/IC, UL/ULC
PIR and Microwave Detector with Pet Immunity (9.9 GHz) LC-104-PIMW-IT	European CE Directives (EMC, R&TTE, LVD)
PIR and Microwave Detector with Pet Immunity (10.687 GHz) LC-104-PIMW-UK	European CE Directives (EMC, R&TTE, LVD)
<b>GLASSBREAK DETECTOR LC-105-DGB</b>	
Digital Glassbreak Detector LC-105-DGB	European CE Directives (EMC), FCC
<b>DUAL-TECH OUTDOOR MOTION SENSOR (SINGLE PIR &amp; MICROWAVE) WITH ADJUSTABLE PET IMMUNITY LC-151</b>	
Form 'C' alarm contact and tamper switches LC-151	European CE Directives (EMC, R&TTE, LVD), FCC/IC
<b>DUAL-TECH OUTDOOR MOTION SENSOR (DOUBLE PIR &amp; MICROWAVE) WITH PET IMMUNITY LC-171</b>	
Form 'C' alarm contact and tamper switches LC-171	European CE Directives (EMC, R&TTE, LVD), FCC/IC
<b>GLASSBREAK DETECTORS</b>	
<b>ACUITY® GLASSBREAK DETECTORS - WALL MOUNT</b>	
Form 'A' alarm contact AC-100	European CE Directives (EMC), EN50131-1 Grade 2, Class II Environment, FCC/IC, UL/ULC
Form 'A' alarm contact & tamper switch AC-101	European CE Directives (EMC), INCERT (Belgium), NCP (Holland), EN50131-1 Grade 2, Class II Environment, FCC/IC, UL/ULC
Form 'C' alarm contact & tamper switch AC-102	European CE Directives (EMC), EN50131-1 Grade 2, Class II Environment, FCC/IC, UL/ULC
<b>ACUITY® GLASSBREAK DETECTORS - MONTAGE PLAFONNIER</b>	
Form 'A' alarm contact AC-500	European CE Directives (EMC), EN50131-1 Grade 2, Class II Environment, FCC/IC, UL/ULC
Glassbreak Detector DG-50BU	FCC/IC
<b>ACCESSORIES</b>	
Glassbreak Simulator AFT-100	—
Shock Sensor SS-102	European CE Directives (EMC), FCC/IC
<b>WIRED PHOTOELECTRIC SMOKE DETECTORS FSA-210/410</b>	
*Legend (x) = 'B' MEA model number   (x) = 'C' European model number	
2-wire photoelectric smoke detector FSA-210(x)*	MEA Model 'B': European CE Directives (EMC, R&TTE, LVD, CPD), FCC/IC, UL/ULC European Model 'C': European CE Directives (EMC, R&TTE, LVD, CPD)
2-wire photoelectric smoke detector w/ heat detector FSA-210(x)T*	MEA Model 'B': European CE Directives (EMC, R&TTE, LVD, CPD), FCC/IC, UL/ULC European Model 'C': European CE Directives (EMC, R&TTE, LVD, CPD)
2-wire photoelectric smoke detector w/integral sounder & heat detector FSA-210(x)ST	MEA Model 'B': European CE Directives (EMC, R&TTE, LVD, CPD), FCC/IC, UL/ULC European Model 'C': European CE Directives (EMC, R&TTE, LVD, CPD)
4-wire photoelectric smoke detector FSA-410(x)*	MEA Model 'B': European CE Directives (EMC, R&TTE, LVD, CPD), FCC/IC, UL/ULC European Model 'C': European CE Directives (EMC, R&TTE, LVD, CPD)
4-wire photoelectric smoke detector w/ aux. relay & heat detector FSA-410(x)R*	MEA Model 'B': European CE Directives (EMC, R&TTE, LVD, CPD), FCC/IC, UL/ULC European Model 'C': European CE Directives (EMC, R&TTE, LVD, CPD)

Some products are not available in all countries. Contact your local distributor for details.

MODEL	APPROVAL LISTINGS
<b>WIRED PHOTOELECTRIC SMOKE DETECTORS FSA-210/410</b>	
*Legend (x) = 'B' MEA model number   (x) = 'C' European model number	
<b>4-wire photoelectric smoke detector w/ integral sounder FSA-410(x)S*</b>	MEA Model 'B': European CE Directives (EMC, R&TTE, LVD, CPD), FCC/IC, UL/ULC European Model 'C': European CE Directives (EMC, R&TTE, LVD, CPD)
<b>4-wire photoelectric smoke detector w/ integral sounder &amp; heat detector FSA-410(x)ST*</b>	MEA Model 'B': European CE Directives (EMC, R&TTE, LVD, CPD), FCC/IC, UL/ULC European Model 'C': European CE Directives (EMC, R&TTE, LVD, CPD)
<b>4-wire smoke detector w/integral sounder, aux, relay &amp; heat detector FSA-410(x)RST*</b>	MEA Model 'B': European CE Directives (EMC, R&TTE, LVD, CPD), FCC/IC, UL/ULC European Model 'C': European CE Directives (EMC, R&TTE, LVD, CPD)
<b>4-wire smoke detector w/aux, relay &amp; heat detector FSA-410(x)RT*</b>	MEA Model 'B': European CE Directives (EMC, R&TTE, LVD, CPD), FCC/IC, UL/ULC European Model 'C': European CE Directives (EMC, R&TTE, LVD, CPD)
<b>4-wire smoke detector w/heat detector FSA-410(x)T*</b>	MEA Model 'B': European CE Directives (EMC, R&TTE, LVD, CPD), FCC/IC, UL/ULC European Model 'C': European CE Directives (EMC, R&TTE, LVD, CPD)
<b>Handheld Test Meter FSD-100</b>	European CE Directives (EMC), FCC/IC, UL/ULC
<b>ACCESSORIES</b>	
Polarity reversal module, PCB for panel mounting (2-wire interconnect) PRM-2W	Not CE Listed, FCC/IC, UL/ULC
Polarity reversal module in plastic case (2-wire interconnect) PRM-2WC	Not CE Listed, FCC/IC, UL/ULC
Polarity reversal module, PCB for panel mounting (4-wire interconnect) PRM-4W	Not CE Listed, FCC/IC, UL/ULC
Polarity reversal module in plastic case (4-wire interconnect) PRM-4WC	Not CE Listed, FCC/IC, UL/ULC
End-of-line power supervisory relay (4-wire detectors only) RM-2	Not CE Listed, UL/ULC
<b>TRANSMITTERS</b>	
<b>GSM/GPRS Wireless Alarm Communicator GS2065</b>	European CE Directives (EMC, R&TTE, LVD), FCC/IC, UL/ULC, ICASA (South Africa), CERT (Tunisia)
<b>Internet and GSM/GPRS Dual-path Alarm Communicator TL265GS</b>	European CE Directives (EMC, R&TTE, LVD), FCC/IC, UL/ULC, ICASA (South Africa), CERT (Tunisia)
<b>GSM/GPRS Wireless Alarm Communicator GS2060</b>	European CE Directives (EMC, R&TTE, LVD), FCC/IC, UL/ULC, ICASA (South Africa)
<b>Internet and GSM/GPRS Dual-path Alarm Communicator TL260GS</b>	European CE Directives (EMC, R&TTE, LVD), FCC/IC, UL/ULC, ICASA (South Africa), CERT (Tunisia)
<b>GSM/GPRS Universal Wireless Alarm Communicator GS3100-K</b>	European CE Directives (EMC, R&TTE, LVD)
<b>GSM/GPRS Universal Wireless Alarm Communicator GS3055-IGW</b>	European CE Directives (EMC, R&TTE, LVD), UL/ULC, FCC/IC
<b>T-Link Residential IP Alarm Communicator TL150</b>	European CE Directives (EMC), FCC/IC
<b>T-Link Internet/Intranet Alarm Communicator TL250CE</b>	European CE Directives (EMC), UL/ULC, FCC/IC
<b>T-Link Internet/Intranet Alarm Communicator TL260</b>	European CE Directives (EMC, R&TTE, LVD)
<b>T-Link Internet/Intranet Alarm Communicator TL265</b>	European CE Directives (EMC, R&TTE, LVD)
<b>T-Link Universal IP Alarm Communicator TL300CE</b>	European CE Directives (EMC), UL/ULC, FCC/IC
<b>SUR-GARD</b>	
<b>Dual Phone Line With Optional IP Receiver SG-SYSTEM I</b>	FCC/IC, UL/ULC, European CE Directives (EMC, R&TTE, LVD)
<b>Single-Line IP Receiver SG-SYSTEM II</b>	FCC/IC, UL/ULC, European CE Directives (EMC)
<b>Virtual Receiver SG-SYSTEM III</b>	FCC/IC, UL/ULC, European CE Directives (EMC, R&TTE, LVD)
<b>POTS Line Card For SYSTEM III SG-DRL3STD</b>	FCC/IC, UL
<b>Network Line Card For SYSTEM III SG-DRL3-IP</b>	FCC/IC, UL

Some products are not available in all countries. Contact your local distributor for details.



# YOUR MOST VALUABLE TOOL MAY BE ON THE WEB

The DSC.com website



The DSC.com website has been rebuilt from the foundation up with special attention focused toward intuitive navigation, faster download speed and greater access to technical resources.

Now with a more robust technical library, you can quickly and easily find user and installer manuals, software, product descriptions, photography, application notes, solutions and certifications.

**DSC.com, your complete online resource for DSC product information.**

Some products are not available in all countries. Contact your local distributor for details.



*A Tyco International Company*

For more information on the products featured here  
or on any other DSC products please call:

**+1-905-760-3000**

**E-mail: [info@dsc.com](mailto:info@dsc.com)**

**or contact your DSC Account Representative.**

**Please visit us at [www.dsc.com](http://www.dsc.com)**

**For product information**  
**[www.dsc.com](http://www.dsc.com)**

Product specifications and availability subject to  
change without notice. Certain product names  
mentioned herein may be trade names and/or  
registered trademarks of other companies.  
©2010 2010-03